



# Your Hometown

## Your Choice, Your Hospice

Volume 13

“Discover the Difference”

FALL 2017

Richmond County Hospice, Inc., Hospice Haven, Anson Community Hospice



### ONE BEAUTIFUL NIGHT DANCING WITH THE STARS

Sincere thanks and appreciation to everyone who made DWTS a success: Our Amazing dancers - returning Champions Claudia and Kenneth Robinette, Mary Kate Lambeth and Matt Harrelson; 2017 dancing duos-Pam Easterling and Alissa Scott, Dennis Quick and Dr. Mary Catherine Moree, Robert Smith and Tarrah Billingsley, Johnny Juarez and Angela Butler, Joe Dumayas and Tena Grainger, Kyle and Jordyn Pillar, Juan Lopez and Karol Diaz, Seth Allen and Gabrielle Robinette Goodwin, and Lance and Sarah Beth Jenkins; exhibition dancers - Sydney West and Brianna Goins; Food Vendors-Mi'Casita, Hickory Tavern, La Cabana, Peking Wok, Captain George's Seafood, Smithfield Chicken 'n Bar-B-Q, Scott's Table, Wing Queen, Godfather's Pizza. #1 Diner, Henry's Uptown Cafe, Taco Loko, FATZ, Los Cabos, Half Baked, and Rita's Ice: Table Sponsors - Tri-City, Inc., Mabry's Drug and Home Care, Big K Propane, Father Capodanno High School, Armando's Grill, ReMax, Mr. Joseph Moree and Dr. Mary Catherine Moree, and Tri-Cook Electrical Contractors; Judges - Travis Breen, Kim Menna, and Eric McCotter; DJ: Stewart Niemyer; Emcee: Joey Bennett; The Cole Auditorium staff and Richmond Community College maintenance staff - Liberty Place - donation of space for our group dance lessons; Sharon Nichols - donation of time to the group dance lesson and assistance with the dancers the night of the event; Katie Mabe - donation of time and talents to create our dancers' videos and a review video from last year's event; Watson - King and Richmond County Memorial Park - roses presented to our winners; Mirror Master Events - donation of Magic Mirror for selfie fun during the event; Shandi Webb - donation of time to take pictures and videos of the night's fun; Mini-Maxi Storage - donation of a box truck to move all of the décor; Lucero's - donation of tables used during Taste of the Sandhills; Volunteers - preparing for the event, during the event, and cleaning up after the event; Our amazing hospice team - all the hard work that culminated in this wonderful event.

EXTRA SPECIAL THANKS: Nic Wilkes - the creative mastermind behind all of the décor

Congratulations to our winners: The Tasty Award - #1 Diner; Judges Choice - Robert Smith and Tarrah Billingsley; People's Choice - Seth Allen and Gabrielle Robinette Goodwin; and Hospice Choice - Dennis Quick and Dr. Mary Catherine Moree

Thanks to everyone who attended and had a fun time. We look forward to next year's Dancing with the Stars Disney night! Mark your calendars now for Saturday night September 8, 2018!

## Meet Our Hospice Family

### HOSPICE NURSE AIDES

Tammy Bull, NA II, CHPNA  
Hospice Aide Coordinator

Tina Blake, NA II

Teresa Graham, NA II

Stephanie Baldwin, NA I

Sybil Oxendine, NA I

Esmeralda Rodriguez, NA I

Sinatras Slater, NA I

Annalisa Thompson, NA I

Patricia E. Goodwin, NA I

Kelly Williams, NA I

Kayla Sell, NA I

Angela Nelson, NA I

Emogene Cash, NA I

### PATIENT CARE TECHNICIANS

Kay Brewington, NA II

Joeann Smith, NA I

Victoria Brown, NA I

Audrey Martin, NA I

Latoya Ratliff, NA I

Kathy Taylor, NA I

### HEMOCARE PRIMARY NURSES

Tammy Driggers, RN,CHPN

Peggy Gatewood, RN

Lori Jenkins, RN

Michelle Rogers, RN

Cayce M. Terry, RN

Lisa Wood, RN,CHPN

### INPATIENT NURSES

Shonda Crump, LPN

Deanna Treadaway, RN

Karen Geiger, RN,MSN

Teresa Balzer, RN,BSN,CHPN

Ann Elise Taylor, RN,PT

Kathleen Camp, RN,CHPN,PT

Lacey K. Hogan, RN, PRN

Patricia Wheeler, RN,PRN

### ON CALL NURSES

Johanna Poole, RN  
Sylvia Webb, RN

### ADMISSIONS & OUTREACH

Heather Monroe, RN,CHPN  
Clinical Specialist

Teri Norwood, LPN  
Referral Intake Liaison

Lisa O'Neal, AAS  
Volunteer/ Outreach Coordinator

Krista Phifer, RN  
Development/ Outreach Coordinator

### FAMILY SERVICES

Sandy Black, BSW  
Bereavement Coordinator

Christopher Thornton, CPC  
Chaplain

Kenneth Lyerly, MDIV.  
Chaplain-PRN

Stephanie Thornton, BA  
Inpatient Care Coordinator  
Social Worker

Shannon Huff, BA  
Social Worker

Mary Martha Warnock, BSW  
Social Worker

Laken Locklear, MSW/Intern

### MEDICAL STAFF

Dr. Thai Trihn, Hospice Physician-PRN

Dr. Jennifer Yates, Hospice Physician-PRN

### SUPPORT STAFF

Jane Burnette, Billing/Account Specialist

Faith Jones, Clinical Office Coordinator

Linda Russell, Secretary/Receptionist

Buddy Edwards, Maintenance Technician

Patricia Hogan, Housekeeping-Haven

Rosa G. English, PT Housekeeping/Admin

Jewel Mabe, PT Medical Coder

Ellen Richburg, PT Office Support

Nic Wilkes, PT Landscape/Gardener

### MANAGERS & DIRECTORS

Kristina Leyden, MSW- LCSW  
Chief Executive Officer

Steven Strobel, MD  
Chief Medical Officer

Julie Woody, RN,CHPN  
Director of Public Relations

Marvin Taylor, BS  
Director of Finances

Arturo De Aguilar, MA, MDIV.  
Director of Human Resources

Jessica Mims, BSW,CHP-SW  
Director of Family Services

Jenny Mabe, RN, CHPN  
Director of Nursing (Home Care)

Hollie Smith, RN, CHPN  
Director of Inpatient Care

### BOARD OF DIRECTORS

Neal Watkins, Chairman

Gerald Witherspoon, Vice Chairman

James McLester, Treasurer

Sharon Hutchinson, Secretary

Linda Bayless

Wayne Burgess

Vickie Cox

Rev. Chris Hawks

Carlotta Griffin-Knotts

Patti Jenkins

Michelle Parrish

Dennis Quick

Donnie Richardson

All of our volunteers who are part of our Richmond County Hospice Family Their gift of time and dedication makes our organization the best "Home Town Hospice" around!



# HOSPICE SABBATH

Hello, my brothers and sisters in Christ!

I pray that the peace of God be with each of you! This time of year is a special time for hospices all across the country, and November 1, 2017 marks the beginning of National Hospice Month. The Board of Directors and staff at Richmond County Hospice, Inc., would like to invite you and your church to take part in this celebration by participating in the Hospice Sabbath on November 19, 2017. This Hospice Sabbath is a time for your congregation to honor those individuals who have passed away throughout the last year.

Richmond County Hospice, Inc., would like to include you in this time of remembrance by offering a single white rose in memory of those individuals who have passed in your congregation and also bulletin inserts that explain the meaning of the rose and Hospice Sabbath. The rose and inserts come at no cost to the churches who wish to participate. Roses and inserts will be delivered on Thursday, November 16, 2017, and Friday, November 17, 2017. Please RSVP by no later than October 31, 2017.

Hospice Sabbath is only one part of our Community Church Outreach program. I would like to take this opportunity to invite you to take part in our other programs. Our second form of outreach is a Newsletter that I write each month. We are offering this newsletter to churches to provide bulletin inserts for your congregation. These articles are written with the intention to help uplift and unite the body of Christ. Lastly, our organization would appreciate the opportunity to be invited into each church to explain what Hospice is, how it works, who qualifies, and to end the myth that Hospice is just about death.

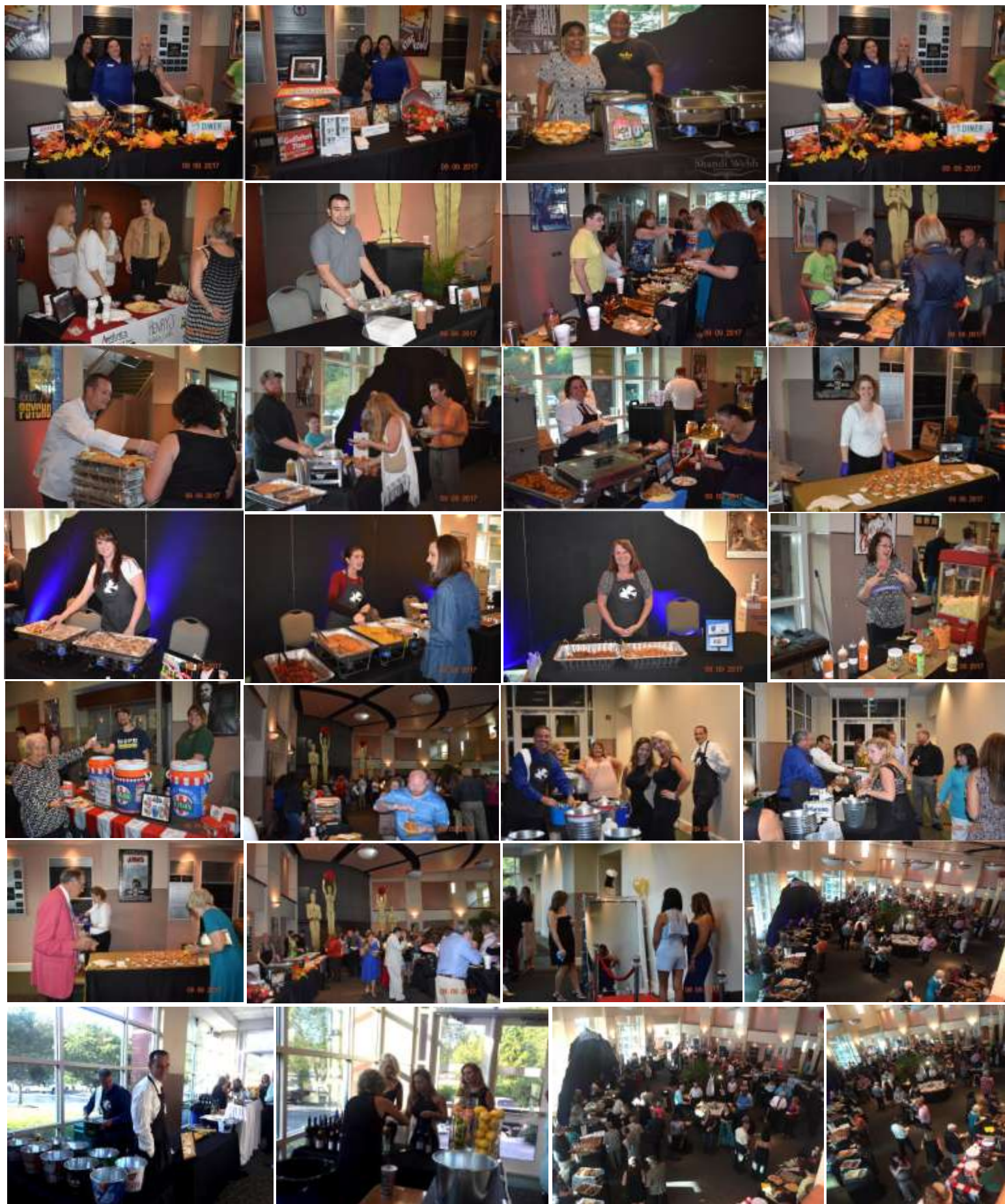
In closing, I would like to extend a heartfelt “Thank You” on behalf of Richmond County Hospice, Inc., for all you do for our community. We will continue to be here for you as you have been here for us. If you want to be a part of any of our Outreach programs or have any questions, please contact me at (910) 997-4464.

In Christ’s Love,

Rev. Chris Thornton, CPC, Chaplain



Continued from front cover..., *Taste of the Sandhills*



# *Dancing With The Stars*



# One Beautiful Night!



# Thank you to our MANY sponsors for their support of our Taste of the Sandhills Showcasing Dancing with the Stars Event. We couldn't have

## done it without you!



Development • Management • Leasing  
**Tri-City, Inc.**  
1227 Rockingham Road  
Rockingham, NC 28379



**Carolina**  
PROPERTY SALES  
and  
RENTALS  
Katie Mabe, Realtor  
Proudly Serving Richmond and Moore  
Counties



"Serving the Sandhills For Over 50 Years"  
41 West Main Street  
Hamlet, N C 28345 ~ (910) 582-1776  
Call all locations toll free (866) 762-



**910-895-9410**



The Perfect Place To Store Everything  
1007 Highway 74 East  
Hamlet, N.C. 28345  
(910) 582-9911



**SHANDI WEBB  
PHOTOGRAPHY**

109 Plantation Road ~  
Rockingham, NC 28379  
(910) 995-2908

**James and Linda McLester**



FORMAL FASHIONS • TUXEDO RENTAL  
RECEPTION DECORATIONS  
TABLE LINENS RENTALS  
TUXEDO RENTALS AND SALES  
AND SO MUCH MORE!

1788B E. BROAD AVE.  
ROCKINGHAM, NC 28379 910.895.5596



**GRIFFIN CHRYSLER,  
JEEP, DODGE**  
961 E US Hwy 74 Rockingham  
910-582-1200



5256 Ashemont Road  
Aberdeen, NC 28315  
(910) 281-0853



**RICHMOND PLAZA**  
1305 E Broad Ave  
Rockingham, NC



**RE/MAX**  
234 East Washington Street  
Rockingham, NC 28379  
Phone: (910) 895-9191  
Fax: (910) 895-9130



**BIG K  
PROPANE**  
(910) 895-0832



*Mr. Joseph  
A. Moree &  
Dr. Mary  
Catherine  
Moree*



Call/Email for your custom quote:  
Keri Cook 910.331.4344 or Tega Cook 910.331.5583  
mirrormasterevents@gmail.com



**Watson-King  
Funeral  
Homes**  
(910) 895-4011  
(910) 582-4011

**Liberty Place**

214 East Washington Street Rockingham, NC 28379

## OUTREACH DEPARTMENT

Richmond County Hospice's Outreach Department is made up of two positions. Krista Phifer, RN, is our Development/Outreach Coordinator and reaches out to our medical community to offer informational sessions, works to acquire donations for our programs and events, records PSAs with local radio stations, helps keep the Facebook world informed of what's going on with Richmond County Hospice via our Facebook page, and many other activities that go along with referral and financial development. Lisa O'Neal is our Volunteer/Outreach Coordinator and works with our patients and volunteers to pair them when a volunteer is requested, trains our volunteer staff, reaches out to groups to recruit additional volunteers, offers educational opportunities to church and civic groups, and many other activities to increase community knowledge and our volunteer base. If you would like to gain more information about hospice services, donor opportunities, or volunteer opportunities, please contact Krista or Lisa at 910-997-4464.







## ON CALL CHAPLAIN PROGRAM



Richmond County Hospice, Inc., has many programs that not only assist the patient but also the family. One of these is the On-Call Chaplain program. Our On-call Chaplain program is setup to be able to provide 24/7 pastoral care to patients and their families.

Hospice is much more than a nine to five job. Patients and families may need spiritual support at many times throughout the day or night, and we are here to offer comfort and compassion. This program consist of pastors in the community who are willing to provide the spiritual support needed at any time. The best part about this program is that it is done by volunteers!

Currently, we have five volunteer chaplains participating in our program. Not only is this program comprised of volunteers but also has individuals who show compassion, understanding, and a willingness to devote some of their time to something greater than themselves.

We would like to take this time to thank each one of our current volunteer chaplains for their dedication to providing compassionate spiritual support for our patients and families.

Do you think you might be interested in becoming a part of something that gives back to the community but worry that you don't have the time? Being part of the On-Call Chaplain program is something that any pastor can do. Since our program is made of volunteers, we use a rotating schedule so that no one pastor is on-call all the time. Do you worry that you may not be capable? Training is provided to each pastor so they are well prepared to work with our patients and families.

If you think you or your pastor would make an excellent addition to our program, please contact Chris Thornton at 910-997-4464.

### **Rev. Chris Thornton, CPC**

*Chaplain*

*Richmond County Hospice, Inc.*

*Hospice Haven General Inpatient Center &*

*Anson Community Hospice*

*1119 North US Hwy 1*

*Rockingham, NC 28379*

*Phone: 910-997-4464*

*Fax: 910-997-4450*

*Cthornton@rchospice.com*

*www.richmondcountyhospice.com*



## ***New Faces at Hospice***

In the past few months, three people joined our Richmond County Hospice family. Please join us in welcoming them to our team.



### ***Deanna Treadaway***

Deanna worked for Richmond County Hospice some time ago and decided it was time to return to us. She came back to Hospice with added comprehensive Hospice experience via Scotland Hospice Morrison Manor as an RN for five years. Deanna is currently a night shift inpatient nurse in our Hospice Haven. Besides all of her experience, Deanna bring a loving and caring dedication to all our patients. Welcome!

### ***Kayla Sells***

Kayla is a young Nurse Assistant who is blessed with enthusiasm and compassion for people, especially for her patients. As a Hospice Aide, she is currently attending Richmond Community College studying for her RN. Kayla enjoys visiting her patients' homes and providing quality service to all of them. We are elated to have Kayla with us!



### ***Teresa Balzer***

Joining RCH in 2012, last year Teresa decided to become PRN. Now, she has returned as a full-time night shift Hospice Haven inpatient nurse. We are excited to have Teresa rejoin us full time with her newly acquired skills as an RN (BSN). Congratulations Teresa!



## RCH 1<sup>st</sup> Commercial: RCH LIVE AT 5

Richmond County Hospice partnered with the Richmond Observer to produce Richmond County Hospice's first commercial. The commercial features our very own Lisa Wood, RN; Patricia Goodwin, CNA; and Frances Couch during a home care visit. Ms. Couch shared her gratitude for the services she receives from Richmond County Hospice. She also reminisced with pictures from her youth with her grandson Garrett. The commercial begins with pictures of the Richmond County Hospice grounds and Hospice Haven. Ms. Couch is filmed saying "Hospice, y'all just out do yourselves every day. I honestly don't know what I would do without you. The things that you do I am in approval of, and thank you.

I don't know what else to say other than thank you." The commercial first aired on the Richmond Observer's Live at 5 internet news show on August 7, 2017, and airs five days a week with every Live at 5 broadcast. In addition to the commercial, our marketing package with the Richmond Observer includes: a front page square ad next to headline story, vertical banner on front page next to Live at 5 nightly news video player, and a half page ad on the e-reader/Kindle edition in every day's e-paper.





Thank you to all the wonderful volunteers who helped make our 2nd annual “Taste of the Sandhills showcasing Dancing with the Stars” event a huge success. We are so appreciative to each of you for donating your time and talents on this special night.





## Chaplain's Corner



Rev. Chris Thornton

I pray that the peace of God be with each of you every day. I have written about the glory of God and our purpose in this life in the past, but I can't stress the importance of us grasping this! We were sent here to be in this ever moment to bring glory to God. Whatever you are facing no matter how bad things may be, God has called us to bring glory to Him. The Lord is our strength to be able to do this, and it's only through His grace that makes it possible. Jesus said to His Father in **John 17: 4** *"I brought glory to you here on earth by doing everything you told me to do."* As I looked deeper in how to bring glory to God, I found four ways that will always bring that glory to God.

First, worshipping The Lord will bring glory to God if we are motivated by love, thanksgiving, and delight, not out of duty. Worship is far more than praising, singing, and praying. Worship is a lifestyle. When we use our life for God's glory, everything we do can become an act of worship.

Secondly, we bring glory to God by loving each other. It is our responsibility to learn how to love as God loves, because God is love; and it honors Him. Jesus said in **John 13:34-35**: *"As I have loved so you must love one another. By this all men will know that you are my disciples, if you love one another."*

Thirdly, we bring God glory by telling the world about Him. Once we know the truth, he wants us to share that truth with others. Jesus said in **John 8:32**: *"You will know the truth and the truth will set you free."* He wants everyone to be set free from the laws of sin and death!

Fourthly, being like Christ will always bring glory to God. God wants us to grow spiritually. We just strive to become spiritually mature Christians. Becoming spiritually mature is thinking, feeling, and acting like Christ in every situation. In **2 Corinthians 3:18**: *"As the spirit of The Lord works within us, we become more and more like Him and reflect his glory even more."*

As we go through this next month let us ask ourselves: Am I bringing glory to God? What would Christ do in this situation? Am I really worshipping The Lord every day? Who did I share the Truth with this month? Have I shown the love of Christ to everyone with whom I have come in contact?

### Rev. Chris Thornton, CPC

Chaplain

Richmond County Hospice, Inc.

Hospice Haven General Inpatient Center &

Anson Community Hospice

1119 North US Hwy 1

Rockingham, NC 28379

Phone: 910-997-4464

Fax: 910-997-4450

Cthornton@rchospice.com

www.richmondcountyhospice.com

# NEW CAMPUS SIGNS

Richmond County Hospice's new campus directional signs were installed around the campus a few weeks ago. We are thankful to TRG Sign Company for doing such a great job on our new signs and the Pee Dee Electrics Care to Share Program for the grant!





Richmond County Hospice would like to extend a special thanks to Freedom Baptist Youth Group along with their leaders and Rockingham Church of God of Prophecy church members for their recent work in our gardens. Your help was much appreciated and made a huge impact on the appearance of our grounds. Thank you so much for the hard work!



## Hospice Haven Expansion Update

Hospice Haven has been undergoing an addition and renovation update throughout the last few months. The update is adding an addition to allow for larger work areas in the laundry room, soiled utility room, clean utility room, and a janitor's closet. The addition will also add a storage closet for gardening supplies, an additional office, and a covered ambulance/patient entrance. As the work progresses and comes to an end for the addition in the next few weeks, the renovation phase will begin. This phase will include new carpet, new flooring, painting the inside of the Haven, and repurposing the spaces that were moved outside. A pantry, staff lounge and large storage areas will be added to these spaces, and the current staff lounge will be changed into a family kitchen for our visitors.

As we are seeing our dream come true, we remain very grateful to the Cole Foundation and the Richmond Foundation for allowing us to expand the functionality and mission of the Haven. Hospice Haven is a 24-hour center that provides system management of acute illnesses for the sole mission of providing comfort, support, and dignity in a home-like setting with a wonderful clinical team, including RN's, LPN, Social Workers, and Physicians.





## Hospice Haven Expansion Update



# What's Happening

## AUTUMN IS HERE!!

Enjoying the Creativity of Nic Wilkes as he decorates Richmond County Hospice and Hospice Haven Gardens with fall décor. This time of the year is so beautiful, and with the changing color of the leaves, fall is definitely here.

Thanks to Nic for all his creative ideas for drawing Richmond County Hospice into the fall season.



## Upcoming Events

**Grief Support Group:** Richmond Memorial Park and Richmond County Hospice, Inc., co-facilitate a Monthly Support Group. The meeting is held on the first Saturday of each month beginning at 10:00 am. on the Richmond County Hospice Campus in our Hospice Haven Solarium (2nd building). For more information, please contact Mrs. Sandy Black, Bereavement Coordinator - (910) 997-4464 or Ext. 910-817-2757.

**Anson Grief Support Group:** Anson Community Hospice will sponsor this meeting on the second Tuesday of every month at 12:00 noon at 108 South Green Street, Wadesboro, NC 28170. This is a free grief support group for the community. If you have cared for or lost a loved one, you are not alone. Each person's journey is different, but together, we can help each other through it. For more information, please contact Mrs. Sandy Black, Bereavement Coordinator - (910) 997-4464 or ext. 910-817-2757.

**Annual Salute to Veterans:** Event will be held on Friday, November 3, 2017: Richmond County Hospice - 1119 US Highway #1 North, Rockingham, NC.

**Light of Life Memorial Celebration:** This special event will be held on Tuesday, November 7, 2017, at Second Baptist Church in Hamlet, NC. The program will begin at 6:00pm.

**Forever Tree Lighting Ceremony:** will be held at Richmond County Hospice, Thursday, November 30, 2017 at the Administrative building on the front lawn of Richmond County Hospice.

**Forever Tree Lighting Service:** Anson Community Hospice will hosting a Forever Tree Lighting service on December 7, 2017 at Leavitt Funeral Home, 2036 Morven Road, Wadesboro, NC 28170 at 6:00pm - 8:00 pm.



We're looking for volunteers, civic groups, youth groups, or church groups who would like to participate in beautifying the garden and walking trail at Hospice Haven. If you are interested, please contact Lisa O'Neal, Volunteer Coordinator/Outreach at (910) 997-4464

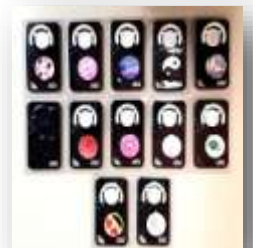


### Culinary Comforts Cookbook

Richmond County Hospice has cookbooks available for a \$20 donation. With your donation you will receive a Richmond County Hospice 30 year anniversary Cookbook, Culinary Comforts from Your Hometown Hospice since 1985. This cookbook contains over 300 recipes, a message from our CEO, and a timeline of our first 30 years. All proceeds from the sale of this cookbook will go to our Benevolent Care Fund. Cookbooks may be purchased at Richmond County Hospice Administrative Office at 1119 US HWY 1 North, Rockingham, NC 28379 or by calling 910-997-4464.

### Popsockets For Sale!

Richmond County Hospice has popsockets for sale - \$8.00 each. All proceeds to benefit Relay for Life. Call or come by if you would like to make a purchase. Mary Martha Warnock (910)-997-4464





## Forever Tree

Our loved ones touched our lives and they forever remain in our hearts. Richmond County Hospice, Inc., would like to invite you to share in the beauty of this joyous holiday season while providing you with the opportunity to share the memory of your loved one on our Forever Tree.

Our Forever Tree will be illuminated by bright white lights representing memorial and honorarium contributions for individuals as given by their family and friends. Individuals may have their loved one remembered by making a \$10 donation to Richmond County Hospice for each light they would like to have named for their loved one.

On **Thursday, November 30th at 6:00pm**, we will conduct a lighting ceremony at **Richmond County Hospice, Inc.**, located at 1119 N US Highway 1, Rockingham, NC. The names of those being remembered or honored will be placed on a light, and all of the names will be read during the Forever Tree ceremony. To be recognized during the ceremony, donations must be received by **Tuesday, November 21, 2017**.

If you decide to place a light on the Forever Tree in memory or in honor of your loved one, please complete the Forever Tree insert for Richmond County Hospice and send it along with your contribution of \$10 per light to Richmond County Hospice Inc. 1119 US Hwy #1 N, Rockingham, NC 28379. Acknowledgements will be mailed beginning **November 21<sup>st</sup>** unless otherwise requested.

**Anson Community Hospice** will host a Forever Tree service **Thursday, December 7th at 6:00pm**. Leavitt Funeral Home located at 2036 Morven Road, Wadesboro, NC will host the event.

Please indicate if you would like your light(s) to be placed on the Anson Community Hospice's Forever Tree by completing the Forever Tree insert for Anson Community Hospice. Please mail the insert with your donation (\$10 for each light) to Richmond County Hospice, Inc., 1119 US Hwy #1 N, Rockingham, NC 28379. Donations are requested by **Friday, December 1st** in order to honor/remember loved ones at the tree lighting ceremony.

As with all contributions to Richmond County Hospice Inc., these donations are tax-deductible; and the funds received from the "Forever Tree" help support our mission of providing grief support and bereavement programs to our families and our community.

## How To Donate To Hospice

MAKE A DONATION

There are several ways to contribute to your hometown hospice. You can donate your time by visiting patients, helping around the offices, helping during special events, in-kind gifts from our Wish List, or sending monetary contributions. Monetary donations may be given in the following ways:

1. Send a check with your donation by mail to our main address
2. Call directly to our office and make a credit card contribution
3. Visit our web site: <http://mpweb.org/hospice>, under the tab GIVE.

You may donate on behalf of someone, in memory, or in honor of a loved one, friend, neighbor, member of your church, or an employee. You may also contribute out of the goodness of your heart.

*Contributions are welcomed towards special projects such as our **BRICK FUNDRAISING** by buying bricks to help build our “Walk to Remember” and the “Veterans Wall.” More information on this project may be found on our web site. All the funds collected through these projects are used directly and exclusively to benefit current and future patients under our care.*



## In-Kind Donations

Richmond County Hospice and the Hospice Haven are very fortunate to be surrounded by a compassionate community who supports our not-for-profit hospice agency. We are honored to care for patients and families during their end-of-life journey. With support of our faith community, business community, private clubs, civic organizations, and individuals, we are able to provide various items to our patients. Below is a list of “wish” items that are continually needed and will help our patients in their homes or in our inpatient center, the Hospice Haven.

Reminiscence Items: journals, pens, greeting cards, stationary; Laundry Supplies: laundry detergents, fabric softeners; Food and Basic Staples: applesauce (individual cups), bread, cake mixes and frostings, cereal, cereal bars, can sodas (sprite, diet coke and coke), cookies (snack size packages), crackers, (individual snack packs), Easy Mac, flavored creamers, frozen dinners, fruits, granola bars, individual ice cream, individual yogurts, jelly, juices, microwave popcorn, peanut butter, pudding cups, snacks; Kitchen supplies: aluminum foil, paper plates, napkins, plastic cutlery, Ziploc bags; Personal Supplies: chap stick, conditioner, shampoo, dental floss, Kleenex, lotion, soap, toothbrushes, toothpaste; Gift cards and Certificates: gas stations, Lowes, and Wal-mart.



Supporting Richmond County Hospice is as easy as shopping on-line. The Amazon Smile Foundation and the ebay Giving Works are programs where a donation of 0.5% of your purchase price will be given to YOUR charitable organization. Please go to your Amazon Account and ebay Giving Works and choose Richmond County Hospice as YOUR organization!

<http://smile.amazon.com/ch/58-1678217>



Help Richmond County Hospice, Inc., raise more funds by adding them as your favorite charity on eBay.

<http://givingworks.ebay.com/charity-auctions/charity/richmond-county-hospice-inc/77770>

## Our Contributors enable us to provide Excellence In End-of-life Care

We would like to take this opportunity to recognize these individuals and publicly acknowledge our appreciation for all they've done. With your continued support, we will be able to provide quality compassionate care to individuals in our community in the future

### **Memorials:**

#### **Robert Johnson**

S. Hewitt Fulton

Laurinburg Lodge No. 305

Millie & Bob McNeill

#### **David Roller**

Hamlet Church of God of Prophecy

Marie Williams

Brian Crook

The Garrison Family

Steve & Michelle Parrish

#### **Elsie Bennett**

Gladys McLendon

#### **Herbert Bailey**

Diana & Lynwood Drye

Connie Guinn

Jill Gullledge

#### **Peggy Coward**

Greg & Terra Wilburn

Patricia Smith

David Coward

Dr. & Mrs. C. Czermak Jr.

Steve & Michelle Parrish

Mrs. W.C. McIntyre

Louis Coward

#### **William Campbell**

Roger Cates

Sandra Ridley

#### **Evelyn English**

Sandra Berry

Al Kressley

#### **Robert Gaaney**

Steve & Michelle Parrish

#### **Kay Aycoth**

Steve & Michelle Parrish

#### **Thelma Knight**

Steve & Michelle Parrish

#### **William LeBerth**

Xerox Corporation U.S.A.

Chris & Brenda Allison

#### **Lura Smith**

Rowena Arthurs

#### **Bernice Oxendine**

The Hatcher Family

#### **Jerry Allen**

Darlene Sugg

#### **Lewis Stogner**

Rebecca Badgett

Stephan R. Futrell

#### **Robert Maloney**

Sam & Ann Ballard

Deborah Mullen

#### **Charles Thompson**

Betty Thompson

#### **Willard Lyon**

Dr. Virginia Morgan

#### **Arminta Brown**

William Reese

Brenda Mitchell

Pamela Reese

Karen Rickett

Providence Baptist Jazzercise Class

Crestview Baptist Church

#### **Bobbie Gibson**

Chris Bennett

Irene & Wade Lewis

#### **Bobbie Irwin**

Amy Archer

#### **Bobby Leviner**

Harold Guinn

Carol Norton

Amy Tatum

Cathy Yates

Brenda Barrett

#### **Sadie Timms**

Carol Norton

Amy Tatum

David & Lucy Jeffcoat

The Fisher Family

#### **Robert Smith**

Alice Warrick

#### **Peggy Harding**

Dot Benson

#### **Charles Stewart**

Judith Myers

#### **Tommy West**

Shirley Taylor

Ricky & Mary Wallace

Prentice Dawkins

#### **Eva English**

Bobbie Schaffnit

#### **Louise Hardison**

Pat Craven

#### **Georgia Carroll**

Harmony Baptist Church

#### **Nina McDuffie**

Deborah Jones

#### **Myrtle Goins**

Betty Williams

Marks Creek Presbyterian Church

Carole Venable

Zan & Gayle Tunstall

#### **James Ralph Mercer**

Kimberly Meadows

Marsha Hunter

Mt. Pleasant United Methodist Church-Ellerbe

Bradley Williams

James, Jeff, & Jon Mercer

Larry & Ann Doby Mercer

Melba Sims

Betty Williams

**Mary Ellen Kindley**

G.R. Kindley

Nancy Perkins

Mario Olivera

Wilson & Audrey Moore

Nancy Robbins

Terry & Alice Brantley Harwell

Elsie Wilson

Alice Warrick

Scholl Mechanical Company

Michael & Kaye Beale

David & Deborah West

Wallace-Dunn Heating & A/C, Inc.

William Whitt

Samaritan Colony Board of Directors & Staff

Bill McKenzie

Vickie Cox

Roger & Sharon Brown

Wayne & Lib Burgess

Mark & Marian Savage

Carrie DeWitt Family Foundation

Sherrill, Blake & Harrison CPA

Kate & Sam Erby

Gary & Penny Henry

Jim Henry & Cassie Delaney & Family

Allen & Cindy Jordan

Walt, Randi, Jordan & Nathan Wood

Dungeon Boxing Club

Debbie, David, & Joshua Anderson

**William Charles Diggs**

Mrs. Charles Diggs

**Rudoll Carson**

Westwood Village Homeowners

**Zane Adams**

Friendship Club

**Gillie Lee Leacock**

Care & Share Nightingales

**Eddie Zilonka**

Care & Share Nightingales

**Kenny Stewart**

G. R. Kindley

**Marjorie Jones**

G. R. Kindley

**Bruce Goodwin**

Unique Stone

**William "Bill" Ott**

G.R. Kindley

**Elbert Williams**

Ricky & Tracie Carpenter

**In Honor:**

**Richmond County Hospice Staff**

Rosa M. Deering Isaac

**Jim & Juanita Owensby's 50<sup>th</sup>**

Zan & Gayle Tunstall

**Mary Heavner**

Roger & Sharon Brown

**Contributions**

Armandos Grill

Murtis Boan

Wayne & Elizabeth Burgess

Circle 8- First United Methodist Church of Rockingham

Father Capodanno High School

First Presbyterian Church-Ellerbe

Griffin-Chrysler-Dodge-Jeep

Mabry's Drug & Home Care

Mi Morenita

Joseph & Dr. Mary Catherine Moree

Bob & Linda McLester

Mt. Calvary Rock of Ages Church

Pink Ladies-Sandhills Regional Medical Center

Reaves Nursery Farm

Remax Southern Realty

David T. Roller

Saron Baptist Church

Second Baptist Church-Hamlet

Douglas Spencer

Tri-Cook Electrical

Neal & Trudy Watkins

Watson-King Funeral Homes

**In Kind:**

Act of Kindness Transportation

Joan Beane

Robert Berry

Diane Bingham

Boe's Florist

Terri Brown

Julie Bullard

Jody Campbell

Pam Easterling

Freedom Baptist Church

Donald Gibson

David Jenkins

Thompson Jones

GR Kindley

Liberty Place

Linda Leviner

Alicia Locklear

Cindy Locklear

Lucero's

Katie Mabe

Ginger McLain

Renee Miller

Mini-Maxi

Mirror Master Events

Heather Monroe

Suzanne Mowery

Mt. Calvary Rock of Ages Church

Sharon Nichols

Jessica Overturf

Sharon Patterson

Karen Richardson

The Roller Family

Saron Baptist Church

Jeff & Jane Scruggs

Nelson Sheppard

Shandi Webb

West Rockingham Church of God

Marie Wheeler

Mrs. Willard



# Richmond County Hospice, Inc.

Hospice Haven & Anson Community Hospice

1119 US Highway 1 North  
Rockingham, North Carolina 28379

Non Profit  
Organization  
US Postage Paid  
Permit: 58  
Rockingham, NC

## FALL EDITION - 2017

Donation \_\_\_\_\_

Please send information on Volunteer Training.

Please remove me from mailing list.

I prefer to receive newsletter via email.

Email: \_\_\_\_\_

### Return to:

Richmond County Hospice  
1119 US Highway 1 North  
Rockingham, North Carolina 28379

## Your Gifts Make a Difference!

Enclosed is my check in support of Richmond County Hospice, Inc.  
(All contributions are tax deductible)

Donor Name \_\_\_\_\_

Address: \_\_\_\_\_

City/State/Zip: \_\_\_\_\_

In Memory Of: \_\_\_\_\_

In Honor Of: \_\_\_\_\_

To Celebrate or Commemorate: \_\_\_\_\_

Send Note To: \_\_\_\_\_

Name: \_\_\_\_\_

Address: \_\_\_\_\_

City/State/Zip: \_\_\_\_\_

How do you wish to have note signed? \_\_\_\_\_



or visit our website at  
[www.richmondcountyhospice.com](http://www.richmondcountyhospice.com)



