



Your Hometown

Your Choice, Your Hospice

Volume 12

“Discover the Difference”

SUMMER 2017

Richmond County Hospice, Inc., Hospice Haven, Anson Community Hospice

Richmond County Hospice promotes **LEARNING** through College Internship Programs

In the last three years, Richmond County Hospice has opened up the volunteer department to college interns from the Bachelors' and Masters' level degrees. We have been fortunate to have students from the BSN (Bachelors of Science in Nursing), BSW (Bachelors of Social Work), MSW (Masters of Social Work), and CMA (Certified Medical Assistant) programs and that colleges allow us to be an approved internship site.

Internships that are well organized and promote a mentoring environment are invaluable to students. Mentoring is important not only because of the knowledge and skills students can learn from mentors, but also because mentoring provides professional socialization and personal support to facilitate success in obtaining a college degree and beyond. Quality mentoring greatly enhances students' chances for success with their professions by allowing them to practice those skills taught in a classroom setting.

This past year we had FOUR wonderful interns. All four of them are pursuing degrees in Social Work and were a wonderful addition to Richmond County Hospice. We appreciated their dedication and team work during their internships! (continued on page 4)



Meet Our Hospice Family

HOSPICE NURSE AIDES

Tammy Bull, NA II, CHPNA
Hospice Aide Coordinator

Tina Blake, NA II

Teresa Graham, NA II

Stephanie Baldwin, NA I

Sybil Oxendine, NA I

Sharna Quick, NA I

Esmeralda Rodriguez, NA I

Sinatras Slater, NA I

Annalisa Thompson, NA I

Patricia E. Goodwin, NA I

Kelly Williams, NA I

Kayla Sell, NA I

Angela Nelson, NA I

Emogene Cash, NA I

PATIENT CARE TECHNICIANS

Kay Brewington, NA II

Joeann Smith, NA II

Victoria Brown, NA I

Audrey Martin, NA I

Latoya Ratliff, NA I

Kathy Taylor, NA I

HEMOCARE PRIMARY NURSES

Tammy Driggers, RN,CHPN

Peggy Gatewood, RN

Lori Jenkins, RN

Michelle Rogers, RN

Cayce M. Terry, RN

Lisa Wood, RN,CHPN

INPATIENT NURSES

Shonda Crump, LPN

Deanna Treadaway, RN

Karen Geiger, RN

Teresa Balzer, RN,BSN,CHPN

Ann Elise Taylor, RN,PRN

Lacey K. Hogan, RN, PRN

Patricia Wheeler, RN,PRN

Kathleen Camp, RN,CHPN,PRN

ON CALL NURSES

Johanna Poole, RN

Sylvia Webb, RN

ADMISSIONS & OUTREACH

Heather Monroe, RN,CHPN
Clinical Specialist

Teri Cowan, LPN
Referral Intake Liaison

Lisa O'Neal, AAS
Volunteer/ Outreach Coordinator

Krista Phifer, RN
Development/ Outreach Coordinator

FAMILY SERVICES

Sandy Black, BSW
Bereavement Coordinator

Christopher Thornton, CPC
Chaplain

Kenneth Lyerly, MDIV.
Chaplain-PRN

Stephanie Thornton, BA
Inpatient Care Coordinator
Social Worker

Shannon Huff, BA
Social Worker

Mary Martha Warnock, BSW
Social Worker

MEDICAL STAFF

Dr. Thai Trihn, Hospice Physician-PRN

Dr. Jennifer Yates, Hospice Physician-PRN

SUPPORT STAFF

Jane Burnette, Billing/Account Specialist

Faith Jones, Clinical Office Coordinator

Patricia Hogan, Housekeeping-Haven

Rosa G. English, PT Housekeeping/Admin

Buddy Edwards, Maintenance Technician

Jewel Mabe, PT Medical Coder

Linda Russell, Secretary/Receptionist

Ellen Richburg, Part-time Office Support

MANAGERS & DIRECTORS

Kristina Leyden, MSW- LCSW
Chief Executive Officer

Steven Strobel, MD
Chief Medical Officer

Julie Woody, RN,CHPN
Director of Compliance

Marvin Taylor, BS
Director of Finances

Arturo De Aguilar, MA, MDIV.
Director of Human Resources

Jessica Mims, BSW,CHP-SW
Family Services Manager

Jenny Mabe, RN, CHPN
Home Care Nurse Manager

Hollie Smith, RN, CHPN
Inpatient Nurse Manager

BOARD OF DIRECTORS

Neal Watkins, Chairman

Gerald Witherspoon, Vice Chairman

James McLester, Treasurer

Sharon Hutchinson, Secretary

Linda Bayless

Wayne Burgess

Vickie Cox

Rev. Chris Hawks

Carlotta Griffin-Knotts

Patti Jenkins

Michelle Parrish

Dennis Quick

Donnie Richardson

All of our volunteers who are part of our Richmond County Hospice Family Their gift of time and dedication makes our organization the best "Home Town Hospice" around!



Light of Life Memorial Celebration

The Bi-Annual Light of Life Memorial Celebration was held on Thursday, May 18, 2017 at 6PM at First Presbyterian Church in Rockingham. The Light of Life service is a remembrance ceremony for families served by Richmond County Hospice, Inc., whose love one died during the past six months. Members of the local community are also invited to attend the special event.

As family members arrived for the service, they lit a candle to commemorate the life of their deceased loved one. Families could also display a framed photograph on the memorial table. The service began with a medley of beautiful hymns played on the piano by Mrs. Linda Hatcher. During the service, Mrs. LaToya Diggs-Jackson sang two heart-felt acapella solos, "Standing on the Promises" and "We Shall Meet," and Mrs. Martha Honeycutt tenderly played "In the Garden" on her harp. Following the message of hope given by Rev. Dwight Williams, the minister of the host church, families and the staff of Richmond County Hospice lit congregational candles.

The candles remained lit during the Naming of Names which was a time of peaceful reflection. The service concluded with Sandy Benfield reciting the poem "Life Is But a Stopping Place" and Chris Thornton, chaplain, closing with prayer. Following the Light of Life Memorial Celebration, families and staff enjoyed a delicious meal catered by Hidden Treasures.

Our hope is the Light of Life Memorial Celebration provides comfort and encouragement to our families and staff during the darkness of grief and sadness. We thank our sponsors Richmond County Farm Bureau and Hidden Treasures for sponsoring this special service.



(continued from page 1)

Our Awesome Interns



Courtney Pope, MSW Intern: My time at Richmond County Hospice has been nothing short of amazing. I have been given opportunities and the freedom to use my style of learning to work with staff and patients within the agency. Richmond County Hospice has shown me that this line of work is not always a sad situation. There is still love, compassion, and happiness even though there is loss. I have learned that the staff of Richmond County Hospice are special individuals placed on Earth to care for our patients and their families.

I hope to take what I have learned from Richmond County Hospice and use it in practice in the near future. I want to thank Richmond County Hospice for all they have done for me, the community, and the patients. You have shown me what it truly means to be a compassionate Social Worker!



Sandra Quick, BSW Intern:

My Internship at Richmond County Hospice—I can say I have had some exciting experiences as a volunteer during my time as a social work student at various places, but the time I have spent at Richmond County Hospice has been the most rewarding by far. The minute you walk through the door here, you are greeted with this warmth by the receptionist Ms. Linda. And from there, anyone you speak to or encounter just makes you feel right at home. From Mrs. Leyden, the CEO, to Mr. Arturo, the HR Director, you know the RCH family of employees operates as a team.

This is an organization that believes in inclusion when it comes to getting things done. No opinion is looked upon as not holding merit; and if you want to help and make a difference, you will be given the chance to do so. My time here has been rewarding in the sense that it has given me an inside look at what takes place in a well-run hospice facility. Providing a shoulder for a family member to cry on to helping that same family find services they desperately need in a time of crisis is a hallmark of Richmond County Hospice.

I was especially proud during my time here to be a part of the yearly grief camp for youth who have suffered a loss. A fun-filled day for the children to forget about their loss for a few hours and just be a kid is what is provided each year. So, from this small reflection of my time here, anyone one can see that Richmond County Hospice is surrounded by uplifting spirits, and one of the most profound for me was my Field Supervisor, Mrs. Sandy Black, the Bereavement Coordinator. To me, she and so many others represent what RCH stands for COMPASSION and DIGNITY along with giving back to the community. Richmond County Hospice provides a much needed service for this county. With no hesitation, I would tell a fellow social work student that this is an excellent internship site.

Our Awesome Interns



Sabrina Bailey, MSW Intern:

Richmond County Hospice, Inc., is a welcoming, cheerful, supportive, and compassionate agency. The agency treats volunteers as one of the team. As a volunteer at Richmond County Hospice, I feel welcome, energized with the support and care given to me from the medical team, and fortunate to have the opportunity to spend precious moments/times with the patients at Richmond County Hospice. My experience as a volunteer at Richmond County Hospice for two months has been one of honor and a blessing to stand by the patient's side through their end-of life journey and see them off into the timelessness of their next life.

No matter what one's beliefs are, the dying process can be a frightening experience for patient and family. As a volunteer, I have the chance to lower the anxiety of the patient and love ones by helping them with their journey with calmness and grace. Richmond County Hospice volunteer services has given me the opportunity to help patients, one-on-one, by allowing me to spend a few hours of a patient's life to ensure that they can enjoy their last days. My goal at Richmond County Hospice is to strive to touch the lives of the patient/family domain by providing them with companionship.

As a result of my experiences at Richmond County Hospice, I would tell people who are considering volunteering at Richmond County Hospice to definitely give it a try and have an open-mind to provide compassion and support to the patient and his/her family. Also, hospice is a great way to learn more about who you are as a person and learn more about others; it aids in you becoming culturally aware of the different approaches to end-of-life care. As a student, it is a wonderful opportunity because one can choose which days to volunteer each week, and students can provide companionship by providing caregiver relief or just spending time with patients while watching a movie/ listening to music/or reading together. Volunteering is a rewarding experience, and I feel privileged to be given the opportunity to spend time with the patient's during last days.



Ashley Howell, MSW Intern:

My experience here as an intern has only confirmed to me more that medical social work is what I want my career to be. Coming to Richmond County Hospice has benefited me in so many ways in the short time that I have been here from working with such a wonderful staff who created an optimal learning environment, to being out in the field hands on with patients and their families providing services. I have truly treasured my time here with hospice and will be able to apply many of the skills learned towards my career.



RELAY FOR LIFE

Richmond County Hospice participated in “Relay for Life” on May 5, 2017 at The Cole Auditorium. “Relay for Life” is the signature fundraiser for the American Cancer Society and is staffed and coordinated by volunteers in more than 5,200 communities and 27 countries.

There were 32 teams registered for this year's event and a total of \$60,308.01 was raised overall in Richmond County. Our team, Richmond County Hospice - “Your Hometown Hospice” ranked 3rd place in fundraising with a total of \$6,102.50 and 1st place for best campsite.

Throughout the year, we hosted a Masquerade \$5 Jewelry sale, hotdog plate, spaghetti plate sale, BBQ sandwich plate sale, and sold various items the night of the event.

Our theme for this year's event was “Heroes for Hope,” and we featured different superheroes in our decorations for our campsite.

We would like to thank our employees who donated time, money, and supplies to make our team successful. We would also like to thank our friends, family members, and the entire community for supporting “Your Hometown Hospice” in our efforts to raise money for “Relay for Life.”





RELAY FOR LIFE



Celebrate our Nurses

National Nurses Week May 6-12



Left to right: Julie Woody, RN,CHPN, Director of Compliance & Organizational Excellence; Heather Monroe, RN, CHPN, Clinical Specialist; Teri C. Brown, LPN/Referral Intake Liaison; Krista Phifer, Development-Outreach Coordinator



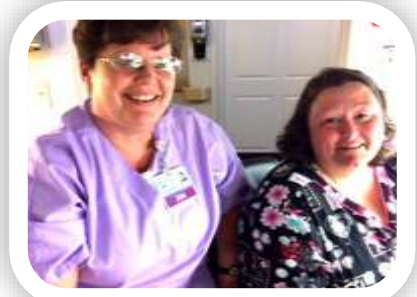
Tammy Driggers, RN, CHPN



Left to right: Lori Jenkins, RN; Cayce, RN; Jenny Mabe, RN, CHPN, Home Care Nurse Manager; Lisa Wood, RN, CHPN; Peggy Gatewood, RN; Michelle Rogers, RN



Johanna Poole, RN-On-call Nurse



Karen Geiger, RN; and Deanna Treadaway, RN



Left to right: Shonda Crump, LPN; Ann Elise Taylor, RN,CHPN, PRN; Hollie Smith, RN,CHPN Inpatient Nurse Manager



Sylvia Webb, RN-On call Nurse



Patricia Wheeler, RN, PRN



Kathleen Camp, RN, CHPN, PRN



Teresa Balzer, RN, BSN, CHPN



Lacey K. Hogan, RN, PRN

Nursing Assistants Week

June 15-22, 2017



(Left to right) Kayla Sell, NA I; Kelly Williams, NA I; Annalisa Thompson, NA I; Tammy Bull, NA II, CHPNA-Hospice Aide Coordinator; and Esmeralda Rodriquez, NA I



Sinatras Slater, NA I



Audrey Martin, NA I; Latoya Ratliff, NA I; and Kay Brewington, NA II



Teresa Graham, NA II



Tina Blake, NA II



Stephanie Baldwin, NA I



Sybil Oxendine, NA I



Sharna Quick, NA I



Patricia E. Goodwin, NA I



Joanne Smith, NA II



Kathy Taylor, NA I



Victoria Brown, NA I



Patricia Hogan, NA I, PRN



HOSPICE
HONORS



FOR IMMEDIATE RELEASE-July 6, 2017

Contact:
Kristina Leyden, MSW, LCSW-CEO
Richmond County Hospice, Inc.
910-997-4464
kmleyden@rchospice.com

Richmond County Hospice Inc. Named a 2017 Hospice Honors Recipient

Rockingham, North Carolina- July 6, 2017—Richmond County Hospice, Inc. has been named a 2017 Hospice Honors recipient by Deyta Analytics, a division of [HEALTHCAREfirst](#), the leading provider of Web-based home health and hospice software, outsourced billing and coding services, and advanced analytics. Hospice Honors is a prestigious program that recognizes hospices providing the highest level of quality as measured from the caregiver's point of view.

"Hospice Honors is a landmark compilation of hospices that provide the best patient and caregiver experiences," said J. Kevin Porter of HEALTHCAREfirst. "I am extremely proud of Richmond County Hospice for achieving this highest of honors and I congratulate them on their success."

Award criteria were based on Hospice CAHPS survey results for an evaluation period of October 2015 through September 2016. Award recipients were identified by evaluating performance on a set of 24 quality indicator measures. Performance scores were aggregated from all completed surveys and were compared on a question-by-question basis to a National Performance Score calculated from all partnering hospices contained in the Deyta Analytics' Hospice CAHPS database. Hospice Honors recipients include those hospices scoring above the Deyta Analytics National Performance Score on 20 of the evaluated questions. Deyta Analytics holds a special recognition, Hospice Honors Elite, to honor hospices scoring above the Deyta Analytics National Performance Score on all 24 of the evaluated questions.

Richmond County Hospice, Kristina Leyden, CEO, credits the hard work and dedication of the entire team at hospice, including the employees, volunteers, and our board members. She said, "We are honored to receive this award two years in a row. We pride ourselves in providing excellence in care and promoting peace, comfort, and dignity for all those we serve. As the hometown hospice, we feel privileged to be a part of this wonderful community and welcomed into so many homes and families. We are thankful to care for our neighbors in their time of need and are grateful for this prestigious award-Hospice Honors."

About Richmond County Hospice, Inc.

Richmond County Hospice (Hospice Haven and Anson Community Hospice) is a rural non-profit Hospice that has been providing compassion and care to our community regardless of a person's ability to pay for the past 32 years. Richmond County Hospice is a leading provider for end-of-life care in our communities. As an integral part of the healthcare system, we lead in the innovative planning and provision of quality care to terminally ill patients.

Our mission at Richmond County Hospice is to comfort the body and heal the heart through compassionate, quality care during end-of-life experiences, so patients and families may live each day with peace, comfort, and dignity.

About HEALTHCAREfirst

HEALTHCAREfirst provides cloud based technologies and services to improve business and clinical operations for over four thousand home health and hospice providers across the United States. Based in Springfield, MO and one of the fastest growing providers of its kind, the company provides agency and clinical management software, outsourced revenue cycle management services (billing, coding and chart audits), CAHPS surveys, and advanced analytics, in any combination. HEALTHCAREfirst's breadth of solutions offers agencies a single source to improve patient care, create operational efficiencies, increase profitability and simplify CMS compliance. With HEALTHCAREfirst, agencies can focus on patients instead of paperwork. For more information call 800.841.6095 or visit the company's website at www.healthcarefirst.com.

Taste of the Sandhills Showcasing Dancing with the Stars

Richmond County Hospice staff and volunteers are busy getting things ready for our upcoming fundraiser to be held **Saturday September 9, 2017** at the **Cole Auditorium** in **Hamlet, NC**. Doors will open at **6:00pm** with menu items from the different food establishments and the dancers will take the floor at **7:30pm**. Tickets went on sale **August 1st** at the **Richmond County Hospice** office or online via our **Facebook** event page.

Tickets are **\$50.00/person** or **\$80.00/couple**. Must be **21 years old** or older to attend the event.

Committed food establishments, at time of publication, for this year's event are:

#1 Diner, Captain George Seafood, FATZ, Godfather's Pizza, Henry's Uptown Café, Hickory Tavern, Half Baked Creative Catering, Kool Kakes Bakery and Café, Pattan's Downtown Grille, Peking Wok, Plaza Jalisco, Rita's Ice and Frozen Custard, Scott's Table, Smithfield Chicken and BBQ, Taco Loko Mexican Restaurant, Twisted Treats, and Wing Queen Café.

Dynamic duos committed to dance are:

Randall and Brittany Gaddy, Robert Smith and Tarrah Billingsley, Walter and Pam Easterling, Seth Allen and Gabrielle Goodwin, Lance and Sarah Beth Jenkins, Kyle and Jordyn Pillar, Joe Dumayas and Tena Grainger, Johnny Juarez and Angela Butler, Carlos and Karol Diaz, and Dennis Quick and Mary Catherine Moree.

Please make plans to join us for a fun evening while supporting Richmond County Hospice.





HOSPICE HAVEN GROUND BREAKING CEREMONY



The ground breaking for our new addition at Hospice Haven was held on Thursday June 29th. Many community members, board members, staff, and dignitaries attended our momentous day.

The new addition will enhance the overall functionality of our Hospice Haven six bed inpatient facility. The Haven was transitioned from a Residential Facility, caring for hospice patients long term as their permanent home to a “hospice hospital” for acute short term symptom management in 2012. The hospice term for this short term care is a General Inpatient Center (GIP). There are 39 General Inpatient Centers in the state of North Carolina and 201 Hospice Agencies. We are proud that we can offer the services of a General Inpatient Center here in Richmond County. Hospice Haven cares for 25-35 patients each month.



Included in this new addition of approximately 1500 square feet and some remodeling is a covered Ambulance/Drop Off Pick Up Entrance with double automatic doors, a safe room for weather that will fit all six hospital beds, a laundry and linen room, storage for medical equipment and medical supplies, larger janitors closet, pantry, outside garden storage, an office, and a family kitchen. In addition to the new wing, some inside enhancements will include painting the clinical area and staff lounge as well as new flooring.



These new updates and addition will allow us to continue providing the utmost quality care for our neighbors who need end of life care. This enhancement would not have been made possible without the Cole Foundation and the Richmond Community Foundation. Both of these organizations awarded Richmond County Hospice \$300,000 in grant monies in 2016 and 2017.



We will keep you posted of our progress and look forward to Stogner Architecture and Hawks Builders working with us on this journey. Keep a look out for our grand opening in January of 2018 of our new wing!



What's Happening



We are always thankful and appreciative of the kindness from our community. The members from Ellerbe Methodist Church made and donated prayer shawls for our patients and their families at Hospice Haven. They are beautiful and will hold many prayers. In Photo: Hollie Smith, Ken and Betty Lyerly, Tammy Medlin, Rev. Elizabeth Polk, and Kristina Leyden.

A Special Thanks to



Freedom Baptist Church

We, Richmond County Hospice, would like to thank Freedom Baptist Church for the staff cook-out. Thank you for all you do for Richmond County Hospice and Hospice Haven.



Golf Tournament

Richmond County Chamber of Commerce sponsored a Golf Tournament where Marvin Taylor and Chris Thornton represented Richmond County Hospice "Your Hometown Hospice" very well!

beautifying THE GARDENS

continued on page 15

Mr. Buddy Edwards
Maintenance Technician



Upcoming Events

Grief Support Group: Richmond Memorial Park and Richmond County Hospice, Inc., co-facilitate a Monthly Support Group. The meeting is held on the first Saturday of each month beginning at 10:00 am. on the Richmond County Hospice Campus in our Hospice Haven Solarium (2nd building). For more information, please contact Mrs. Sandy Black, Bereavement Coordinator - (910) 997-4464 or Ext. 910-817-2757.

Anson Grief Support Group: Anson Community Hospice will sponsor this meeting on the second Tuesday of every month at 12:00 noon at 108 South Green Street, Wadesboro, NC 28170. This is a free grief support group for the community. If you have cared for or lost a loved one, you are not alone. Each person's journey is different, but together, we can help each other through it. For more information, please contact Mrs. Sandy Black, Bereavement Coordinator - (910) 997-4464 or ext. 910-817-2757.

**SAVE
THE DATE!**

2nd Annual Taste of the Sandhills/Showcasing dancing with the Stars: Come join us on Saturday, September 9th for our 2nd Annual Taste of the Sandhills showcasing Dancing with the Stars fundraiser benefiting Richmond County Hospice, held at the Richmond Community College Cole Auditorium, Hamlet, NC. from 6:00pm until 10:00pm. This event will open with a sampling of favorite menu items from local businesses followed by the Dancing with the Stars competition

featuring local "Stars." Mark your calendars now to support this worthy cause while enjoying a night out with friends. Watch this event page for more information and for ticket sales! Last year tickets sold out a few weeks in advance!

Annual Salute to Veterans: Friday, November 3, 2017: Richmond County Hospice - 1119 US Highway #1 North, Rockingham, NC. More details will follow closer to the date.

Light of Life Memorial Celebration: Thursday, November 9, 2017: (Time and location-TBA)

Forever Tree Lighting Ceremony: Thursday, November 30, 2017-held at the Administrative building on the front lawn at Richmond County Hospice.



We're looking for volunteers, civic groups, youth groups, or church groups who would like to participate in beautifying the garden and walking trail at Hospice Haven. If you are interested, please contact Lisa O'Neal, Volunteer Coordinator/Outreach at (910) 997-4464



Culinary Comforts Cookbook

Richmond County Hospice has cookbooks available for a \$20 donation. With your donation you will receive a Richmond County Hospice 30 year anniversary Cookbook, Culinary Comforts from Your Hometown Hospice since 1985. This cookbook contains over 300 recipes, a message from our CEO, and a timeline of our first 30 years. All proceeds from the sale of this cookbook will go to our Benevolent Care Fund. Cookbooks may be purchased at Richmond County Hospice Administrative Office at 1119 US HWY 1 North, Rockingham, NC 28379 or by calling 910-997-4464.

Popsockets For Sale!

Richmond County Hospice has popsockets for sale - \$8.00 each. All proceeds to benefit Relay for Life. Call or come by if you would like to make a purchase. Mary Martha Warnock (910)-997-4464



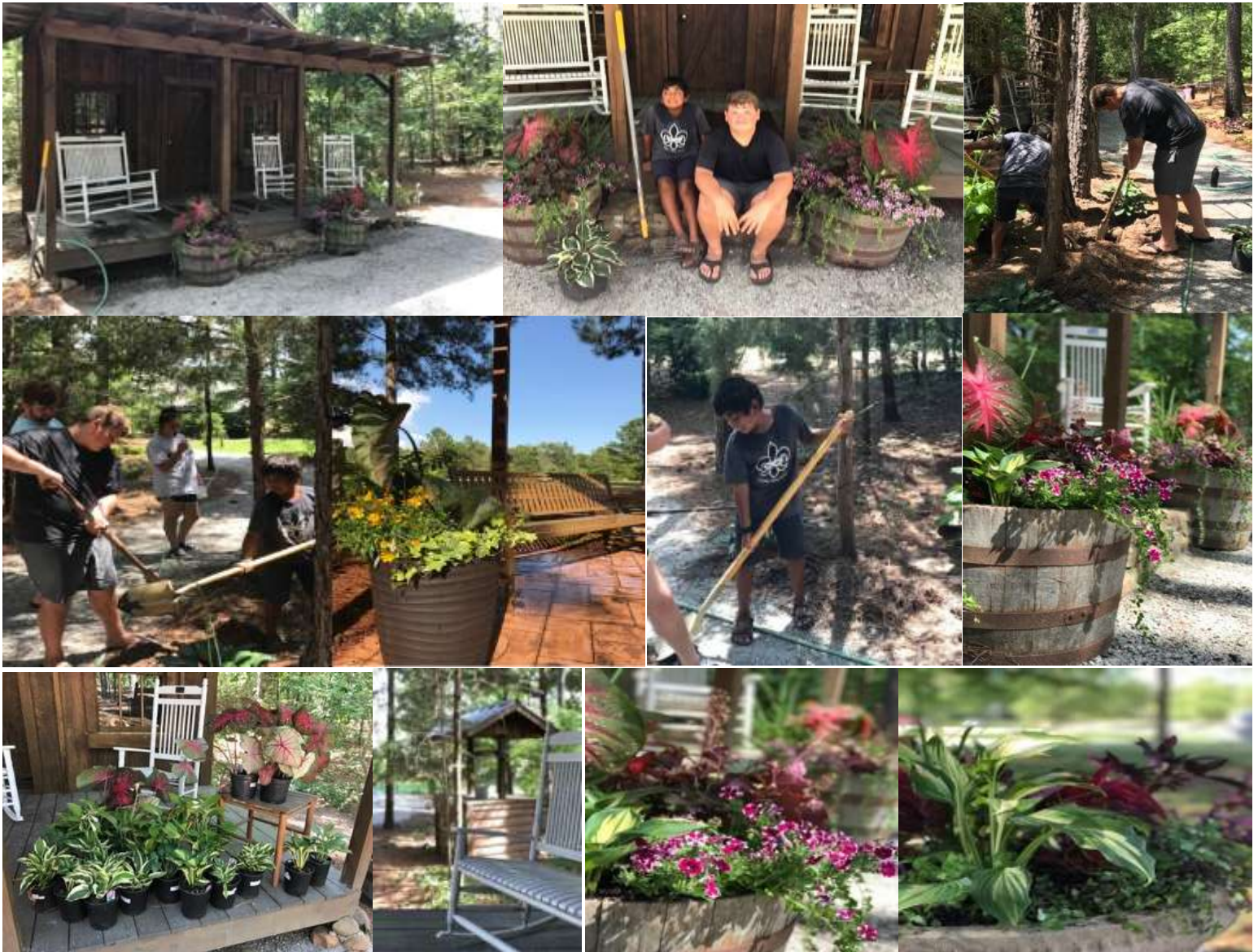
Volunteer Corner

We were thankful that some of our Volunteers (our volunteers under 18) came to assist us at the Soup Kitchen in Hamlet. They did a great job working together as a team! A special thank you to Sabrina De Aguilar, Amani Smith, Kate Leyden, Caroline De Aguilar, and Andrew Leyden.



BEAUTIFYING THE GARDENS

Thanks to our young volunteers who spent their time beautifying the gardens at Richmond County Hospice and Hospice Haven. A very special thank to Kate Leyden, Andrew Leyden, Trae Jones, Nic Wilkes, and Kayla Hernandez for making our gardens beautiful.



Chaplain's Corner



Rev. Chris Thornton

First of all, I would like to take this time to thank all of the churches who have participated in our Church Outreach program and who have allowed me the privilege of speaking to their congregations about Richmond County Hospice and the services we offer. All of these churches have been a blessing and have treated me with the love of Christ! I pray that someone has been reached in each service.

I am looking forward to having the opportunity to speak at many more churches around our community. If I have not yet been to your church, please call me here at the office and I will be more than happy to schedule a time to speak with your congregation. It will be my honor to come and not only educate but also to share what God is doing at Richmond County Hospice!

I would also like to take this opportunity to discuss with you the On Call Chaplain program. This program is continuing to grow and is open to any Pastor who would like to be involved with God's work within hospice. This program provides Pastors with an opportunity to step in at critical moments when a patient or family member could be facing a great spiritual need. I would like to thank all those who are already assisting in this great need.

Lastly, I would like to give a friendly reminder that in November 2017, we will be celebrating our annual recognition of Hospice Sabbath. Please begin to mark this on your calendar as we would like to increase the number of churches that participate in our annual celebration. As November approaches, I will have more information regarding this celebration.

Rev. Chris Thornton, CPC

*Chaplain
Richmond County Hospice, Inc.
Hospice Haven General Inpatient Center &
Anson Community Hospice
1119 North US Hwy 1
Rockingham, NC 28379
Phone: 910-997-4464
Fax: 910-997-4450
Cthornton@rchospice.com
www.richmondcountyhospice.com*

Forever Tree



Our loved ones touch our lives and they forever remain in our hearts. Richmond County Hospice, Inc., would like to invite you to share in the beauty of this joyous holiday season while providing you with the opportunity to share the memory of your loved one on our Forever Tree.

Our Forever Tree will be illuminated by bright white lights representing memorial and honorarium contributions for individuals as given by their family and friends. Individuals can have their loved one remembered by making a \$10 donation to Richmond County Hospice for each light they would like to have named for their loved one.

On **Thursday, November 30th at 6:00pm**, we will conduct a lighting ceremony at **Richmond County Hospice, Inc.**, located at 1119 N US Highway 1, Rockingham, NC. The names of those being remembered or honored will be placed on a light, and all of the names will be read during the Forever Tree ceremony. To be recognized during the ceremony, donations must be received by **Tuesday, November 21, 2017**.

If you decide to place a light on the Forever Tree in memory or in honor of your loved one, please complete the Forever Tree insert for Richmond County Hospice and send it along with your contribution of \$10 per light to Richmond County Hospice Inc. 1119 US Hwy #1 N, Rockingham, NC 28379. Acknowledgements will be mailed beginning **November 21st** unless otherwise requested.

Anson Community Hospice will host a Forever Tree service this year in Anson County. We are in the process of determining the location, date, and time. Please indicate if you would like your light(s) to be placed on the Anson Community Hospice's Forever Tree by completing the Forever Tree insert for Anson Community Hospice. Please mail the insert with your donation (\$10 for each light) to Richmond County Hospice, Inc., 1119 US Hwy #1 N, Rockingham, NC 28379.

As with all contributions to Richmond County Hospice Inc., these donations are tax-deductible, and the funds received from the "Forever Tree" help support our mission of providing grief support and bereavement programs to our families and our community.



Donate

How To Donate To Hospice

There are several ways to contribute to your hometown hospice. You can donate your time by visiting patients, helping around the offices, helping during special events, in-kind gifts from our Wish List, or sending monetary contributions. Monetary donations may be given in the following ways:

1. Send a check with your donation by mail to our main address
2. Call directly to our office and make a credit card contribution
3. Visit our web site: <http://mpweb.org/hospice>, under the tab GIVE.

You may donate on behalf of someone, in memory, or in honor of a loved one, friend, neighbor, member of your church, or an employee. You may also contribute out of the goodness of your heart.

*Contributions are welcomed towards special projects such as our **BRICK FUNDRAISING** by buying bricks to help build our “Walk to Remember” and the “Veterans Wall.” More information on this project may be found on our web site. All the funds collected through these projects are used directly and exclusively to benefit current and future patients under our care.*



In-Kind Donations

Richmond County Hospice and the Hospice Haven are very fortunate to be surrounded by a compassionate community who supports our not-for-profit hospice agency. We are honored to care for patients and families during their end-of-life journey. With support of our faith community, business community, private clubs, civic organizations, and individuals, we are able to provide various items to our patients. Below is a list of “wish” items that are continually needed and will help our patients in their homes or in our inpatient center, the Hospice Haven.

Reminiscence Items: journals, pens, greeting cards, stationary; Laundry Supplies: laundry detergents, fabric softeners; Food and Basic Staples: applesauce (individual cups), bread, cake mixes and frostings, cereal, cereal bars, can sodas (sprite, diet coke and coke), cookies (snack size packages), crackers, (individual snack packs), Easy Mac, flavored creamers, frozen dinners, fruits, granola bars, individual ice cream, individual yogurts, jelly, juices, microwave popcorn, peanut butter, pudding cups, snacks; Kitchen supplies: aluminum foil, paper plates, napkins, plastic cutlery, Ziploc bags; Personal Supplies: chap stick, conditioner, shampoo, dental floss, Kleenex, lotion, soap, toothbrushes, toothpaste; Gift cards and Certificates: gas stations, Lowes, and Wal-mart.



Supporting Richmond County Hospice is as easy as shopping on-line. The Amazon Smile Foundation and the ebay Giving Works are programs where a donation of 0.5% of your purchase price will be given to YOUR charitable organization. Please go to your Amazon Account and ebay Giving Works and choose Richmond County Hospice as YOUR organization!

<http://smile.amazon.com/ch/58-1678217>



Help Richmond County Hospice, Inc., raise more funds by adding them as your favorite charity on eBay.

<http://givingworks.ebay.com/charity-auctions/charity/richmond-county-hospice-inc/77770>

Our Contributors enable us to provide Excellence In End-of-life Care

We would like to take this opportunity to recognize these individuals and publicly acknowledge our appreciation for all they've done. With your continued support, we will be able to provide quality compassionate care to individuals in our community in the future.

(Recorded - April, May, June 2017)

Memorials

Charles "Smurf" Thompson

Robert Brigman

Mount Vernon United Methodist Church

Charles & Carol Thomas

Richard Norwood

Louise Byrd

Howard Rhodes/Mildred Russell

Bonnilee Rhodes

Bennie Adams

Employees of Raleigh City Mgr.'s Office

Carolyn Williamson

Louise Byrd

Hilde Parker

J.R. & Dot Benson

Stella Smith

Marise Covington

Jane Davenport

Dorothy Ingram

Lorio Long

R. H. Jones

Julia Williams

Libby Foust & John

Mary Lampley

Wadesboro Church of God

Keith & Rita Ebbeskotte

Renee Nygard

Geraldine Neal

Anna Thomas

Rose Thompson

Glenda Elliott

Roberdel Baptist Women's Retreat Group

Laurie Giantini

David Fieg

Mickey & Brenda Collins and Family

Charles Cobb

Susan Hartgrove

Channie McManus

Mary Gibson

Patricia E. Watson

Ellerbe Class of 1957

Sue Buffaloe

Carl Tindall

Martha & Mark Summer and Peggy Buffaloe

Ruby Murphy

Leanne Hilliard

Arthur Stutts

Carol Stutts & Family

Robert Maloney

Maureen Taylor

Ruth McNatt

George Whitfield

Anne Castro

Michelle Murphy

David & Kim Lindsey

Frederica Haley

Butch & Sally Stewart

Tommy, Sammy, & Randy Bullard

Betsy Ballard Moore Families

Bob Maloney

Michael Ciani

Billy Lassiter

Bill Rohleder

Woodrow Gunter II

Mary Heavener

Sammy, Michelle, Elizabeth & Matthew Burns

Sandra Rutherford

Helen Medlock

Cathy Guinn

Maple Street Freewill Baptist Church

Herbert Bailey

Danny & Sherry Bynum

Roger & Sharon Bailey

Glenda J. Tice

Carl & Brenda Mabe

Iris West

Jerry Allen

Darlene Sugg

Henrietta Robson

J.C. Everett

Jamie Bullion

Tony Smith

William Amos Lyons

Amos Lyon & Nancy Boiling

Hallie Walls

Jerry & Phyllis Currie

Gary Fisher

Kay Fisher

Newsome, Stutts, Lassiter

Joe & Priscilla Kindley

William LeBerth

Kenneth & Claudia Robinette

Ruth Ann & Dennis Batt

Helen P. Comer

Marcus & Sandra Comer

Peggy Coward

Sally Stewart

Richard & Carol Larsen

Ronald & Christine Beane

William Campbell

Elisabeth Starke

In Kind

Bo, Helen and Dawn Grooms

Linda & Nicole Compton

Carla Dotson

Ruth Campbell

Julia Bullard

Morris Guinn

Harold Pruitt & Laurie Giantini

Darlene Sugg

Nikki Coward

Kim Chavis

Rev. Elizabeth Polk/Ellerbe Methodist Ch.

Dorothy Bogan

West Rockingham Church of God

Tommy Campbell

David Coward

Contributions

Mt. Calvary Rock of Ages Church

Richmond Community Foundation, Inc.

Murtis Boan

First Presbyterian Church, Ellerbe, NC

BB&T Lighthouse Project

Wayne & Elizabeth Burgess

Watson & King Funeral Home

Richmond County Farm Bureau

George W. & Ruth R. Baxter Foundation

City of Rockingham

Big K LP Gas, Inc

Z.V. Pate Foundation, Inc.

Care To Share PEE DEE EMC

Huertas Garden Center

Kenneth & Claudia Robinette



Richmond County Hospice, Inc.

Hospice Haven & Anson Community Hospice

1119 US Highway 1 North
Rockingham, North Carolina 28379

Non Profit
Organization
US Postage Paid
Permit: 58
Rockingham, NC

Summer Edition - 2017

Donation _____

Please send information on Volunteer Training.

Please remove me from mailing list.

I prefer to receive newsletter via email.

Email: _____

Return to:

Richmond County Hospice
1119 US Highway 1 North
Rockingham, North Carolina 28379

Your Gifts Make a Difference!

Enclosed is my check in support of Richmond County
Hospice, Inc.
(All contributions are tax deductible)

Donor Name _____

Address: _____

City/State/Zip: _____

In Memory Of: _____

In Honor Of: _____

To Celebrate or Commemorate: _____

Send Note To: _____

Name: _____

Address: _____

City/State/Zip: _____

How do you wish to have note signed? _____



or visit our website at
www.richmondcountyhospice.com

