



# Your Hometown

## Your Choice, Your Hospice

Volume 2

“It’s All About Living”

Winter 2015

**Richmond County Hospice, Inc. Hospice Haven, Anson Community Hospice**



### Meet our New Chief Medical Officer

In its early days, hospice care in America was sometimes perceived as anti-physician, or at least alternative and definitely apart from mainstream medical care. During these early days of hospice care, often the role of the hospice physician was filled by a volunteer, either a young doctor struggling to establish a fulltime medical practice or else an older physician easing into retirement. It was uncommon for a physician to want to pursue a career in hospice medicine.

According to the Federal regulations (42 CFR 418.54), the Medical Director “assumes overall responsibility for the medical component of the hospice’s patient care program.” Gradually, hospices have come to recognize that the physician’s role as an integral member of the core hospice team demands more than just a regulation on paper; and they round out the depth and quality of the hospice team. Currently there are 40% of hospices in America that have a full-time or part-time Medical Director or Chief Medical Officer; the other 60% have a consulting physician as a Medical Director.

Over and over, successful hospices have shown that their growth is directly related to dedicating a position in-house (full-time or part-time) for a Medical Director or Chief Medical Officer who is skilled both in palliative/pain and symptom management communications and relationship building with the local medical community. Even though a dedicated position in-house for a Medical Director and Chief Medical Officer’s salary can be a significant expense, successful hospices and studies indicate that it more than pays for itself with the agency’s growth. Studies have indicated that a rule of thumb for a full-time physician can be justified with an average daily census of 50-100 patients, with another full time physician recommended for each additional 100 patients. The benefits to having a dedicated position in-house include: overseeing clinical aspects of the hospice as required by Medicare and directing overall patient care policies; medical education via formal rounds and mentoring; accessible, skilled consultation to hospice staff and community physicians; in-service training; active participation in admissions; eligibility requirements; home visits to hospice patients; member of the senior management team; quality improvement; cost containment through activities such as drug formularies, protocol development, and working with community physicians.

In the fall of 2014, Richmond County Hospice made the decision to switch from having a consulting Medical Director to hiring an in-house full-time Chief Medical Officer. Dr. Steven P. Strobel joined Richmond County Hospice on November 1, 2014, as our new Chief Medical Officer. Dr. Strobel is a graduate of the highly rated Ohio State University College of Medicine, board certified in emergency medicine, and trained to deal with acute illnesses and injuries requiring immediate attention. Dr. Strobel did his residency at Summa Health System in Akron, Ohio, and has more than 25 years of experience in the medical field. He comes to Richmond County Hospice via FirstHealth of the Carolinas, where he held several positions, including Medical Director of the emergency departments at FirstHealth Montgomery Hospital and FirstHealth Moore Regional Hospital. He also has experience as a faculty advisor at Montgomery County Community College and clinical assistant professor of emergency medicine at NEOUCOM. He is a highly compassionate, religious, and caring physician who is a great asset to our company and our communities. Dr. Strobel has been a North Carolina resident for most of his career. He and his wife, Anne, have seven children.

## Meet Our Hospice Family

### HOSPICE AIDES

Tina Blake, Hospice Aide  
Teresa Graham, Hospice Aide  
Joyce Little, Hospice Aide  
Sharna Quick, Hospice Aide  
Sinatras Slater, Hospice Aide  
Tiffany Strong, Hospice Aide  
Stephanie Baldwin, Hospice Aide  
Annalisa Thompson, Hospice Aide  
Esmeralda Rodriguez, Hospice Aide  
LaToya Ratliff, Patient Care Technician  
Kay Brewington, Patient Care Technician  
Victoria Brown, Patient Care Technician  
Audrey Martin, Patient Care Technician  
Kathy Taylor, Patient Care Technician  
Kelly Williams, Patient Care Technician  
Charlice Burnett, Hospice Aide- PRN  
Norma Dove, Hospice Aide- PRN  
Tammy Bull, CHPNA  
Hospice Aide Coordinator

### HOSPICE NURSES

Teresa Balzer, RN,CHPN  
Inpatient Case Manager  
Kathleen Camp, RN/Inpatient Case Manager  
Karen Geiger, RN/Inpatient Case Manager  
Ann Elise Taylor, RN/Inpatient Case Manager  
Gwendolynn Holley, RN  
Shonda Crump, LPN/Floater  
Cayce M. Terry, RN/Case Manager  
Tammy Driggers, RN/Case Manager  
Lori Jenkins, RN/Case Manager  
Lisa Pope, RN, CHPN/Case Manager

Peggy Gatewood, RN/Case Manager  
Michelle Rodgers, RN/Case Manager  
Natalie Barbour, RN/ Case Manager  
Michelle Brown, RN/Case Manager-PRN  
Malinda J. Thomas, RN- PRN  
Patricia Wheeler, RN- PRN

### ON CALL NURSES

Christine Norton, RN/On Call Nurse  
Beverly Vaughn, RN/ On Call Nurse

### FAMILY SERVICES

Christopher Thornton, Chaplain CPC  
Mary Martha Warnock, BSW  
Lisa O'Neal, Volunteer Coordinator  
Sandy Black, Bereavement Coordinator  
Shannon Huff, Social Worker  
Ellena Ciccarelli, BA, SW-PRN  
Kenneth Lyerly, MDIV. Chaplain- PRN

### SUPPORT STAFF

Jane Burnette, Billing/Acc. Specialist  
Linda Russell, Secretary/Receptionist  
Faith Jones, Clinical Office Coordinator  
Eddie Edwards, Maintenance Technician  
William Coates, Buildings Janitor  
Sheila Fulp, Data Entry Clerk

### ADMISSIONS & MARKETING

Heather Monroe, RN,CHPN  
Clinical Specialist  
Teri Cowan, LPN/Referral Intake Liaison  
David Jenkins, RRT, Marketing  
Shannon Leviner, Marketing

### MANAGERS & DIRECTORS

Kristina Leyden, LCSW  
Interim Chief Executive Officer  
Steven Strobel, MD,  
Chief Medical Officer  
Marvin Taylor, BS  
Director of Finances  
Julie Woody, RN,CHPN  
Director of Compliance &  
Organizational Excellence

Arturo De Aguilar, MA, MDIV.  
Human Resources Director

Hollie Smith, RN, CHPN  
Inpatient Nurse Manager

Stephanie Thornton, BA  
Inpatient Care Assistant Manager

Jenny Mabe, RN, CHPN  
Home Care Nurse Manager

Jessica Mims, BSW  
Family Services Manager

### BOARD OF DIRECTORS

Neal Watkins, Chairman  
Lynn Clewis  
Ronnie Hawks  
Rita Short  
Rev. Steve Crews  
Linda Bayless  
Brian Baucom  
Sharon Hutchinson  
James McLester  
Carlotta Griffin - Knotts  
Donnie Richardson  
Michelle Parrish  
Gerald Witherspoon  
Patti Jenkins



## SALUTE TO VETERANS



During our fourth annual “Salute to Veterans” event on Friday, November 7<sup>th</sup>, we welcomed 145 individuals while showing appreciation to the veterans in the community. This day of reflection honored those who served our nation and provided an opportunity for RCH to give back. This event would not have been possible without the many organizations that offered sponsorship for this special day.



### Sponsors:

Ellerbe Telephone Company, Mabry’s Drug & Home Care, Pee Dee EMC, Piedmont Natural Gas, Scotland Wholesale, Wal-Mart Super Center, Wise Hospice Options

### In-Kind Donors:

Andy Angisly, Colonel Tony Vacha, Heritage Baptist Church, Josh Chermak and K9 companion, Ken Lyerly, Linda Hatcher, Linda McDonald, Marks Creek Presbyterian Church, Mrs. Lora Lea Martin’s Kindergarten Class; Washington Street School, Outreach for Jesus, Pastor Steve Crews, Richmond County Sheriff’s Office Honor Guard, Sheriff James Clemmons, and SGM Pete Leyden

## CAMP HAVEN 2014



Richmond County Hospice, Inc, kicked off the annual children's grief camp on October 11, 2014. Camp Haven is designed for children ages 5-12 who have experienced a significant loss over the past year. Camp Haven provides a day for children to share their grief with others and learn of the many ways that grief can come through death, divorce, or separation. Children oftentimes experience feelings associated with grief that are not always understood. These feelings can lead to stress, anxiety, anger, fear, or sadness. Camp Haven provides a safe place for kids to be kids and have fun with others who share similar circumstances. Grief is something unique to each person, and Camp Haven provides an opportunity for children to express this in a fun and effective manner.

Camp Haven 2014 offered a variety of activities for participants. After breakfast, as an ice breaker, campers were able to participate in a parachuting activity in order to become familiar with each other. Following this, campers separated into six different stations designed to recognize grief and cope with this in a fun way. These included: Memory Jars, Emotion Bracelets, Rainbow Rice, the Cycle of Emotions, Scrap Booking, and Reflection Quilting. Campers were treated to breakfast, lunch, and snacks along with a free t-shirt, and "goodie bag." Parents were invited to attend the closing ceremony at 2:00 PM with their camper for a balloon release where their loved one was honored.

Children may be referred by teachers, social workers, guidance counselors, or family members. Camp Haven is a day for children to explore, learn, create, and grow through the grieving process. The camp is planned by a collaborative group of Hospice professionals, volunteers, and school faculty who recognize the signs of grief in children and are knowledgeable of effective coping skills. Camp Haven is a community program of Richmond County Hospice, Inc. For further information on Camp Haven please contact: Sandy Black, Bereavement Coordinator at 910-997-4464.



## Light of Life ~ Fall 2014



The bi-annual Light of Life Memorial Celebration was held Tuesday, November 18, 2014, 6:00 PM, at First United Methodist Church in Ellerbe, N.C. This bi-annual event is held as a remembrance ceremony for

Families served by Richmond County Hospice, Inc., who lost a loved one over the past six months. This evening gave families a time to celebrate the lives of those no longer with them. During the service, family members took part in a reflection ceremony by lighting a candle to commemorate the life of someone they lost. In addition, families enjoyed entertainment from local musician, Ken Caulder, as well as the Hospice choir. Following entertainment, guests were treated to a full service catered dinner. Grief can oftentimes create a dark and sad place for individuals to overcome. Light of Life provides an opportunity for families to bring light into their lives and take peace and comfort in the celebration of those who have gone before them.



## Forever Tree ~ Fall 2014

Richmond County Hospice, Inc., invited the community to share in the beauty of this joyous holiday season while celebrating the memory of loved ones they have lost. This year, the Forever Tree was illuminated by bright white lights representing memorial and honorarium contributions for individuals given by their family and friends. Individuals were able to have their loved one remembered by making a \$10 donation to Richmond County Hospice for each light they wished to have named for their loved one.

A tree lighting ceremony was conducted on Monday, December 1, 2014, at 6:00 PM. During this evening the names of all the memorials and honorariums were recognized while attendees were treated to holiday refreshments and Christmas caroling. All funds raised through the Forever Tree go towards the benevolent care fund for Richmond County Hospice, Inc., patients. The Forever Tree is an annual event held at the Administration Building located at 1119 US Hwy 1 N, Rockingham, NC 28379.



## *Volunteer Corner*

We would like to say a big thank you to these individuals who continue supporting Richmond County Hospice. Mt. Olive Christian Child Care, Washington Street School, and Second Baptist Church Day School contributed Thanksgiving and Christmas cards made by the students, so every patient/family received a card during the holidays. Also, a special thanks goes to the Richmond Senior High School Varsity Cheerleaders, Richmond County Schools Exceptional Children's Department, and Temple Baptist Church Dorcas Ministry for their generous donation of personal care items used for patients' birthday bags throughout the year.

Richmond County Hospice would also like to recognize three volunteers who have been an asset to our organization, patients and families: Mary Heavner, Helen Grooms, and Dawn Grooms. These special ladies put together birthday bags for every patient served by Richmond County Hospice. The birthday bags include everyday items such as: shampoo, toothbrush, crossword puzzles, etc. The dedication of these volunteers helps us go the extra mile to provide compassionate care to our patients and families.



If interested in donating items for birthday bags or if you have any questions about donations or volunteering, please contact Lisa O'Neal at (910) 997-4464.

## *Richmond County Hospice Serving at Soup Kitchen*



Richmond County Hospice and staff, in an effort to show our support to the community that has given us much support through the years, serves one day a month at the Hamlet Soup Kitchen. The staff prepares and serves a meal each month, and hospice supports the staff by allowing them time to go and help serve. If you would be interested in helping Richmond County Hospice serve at the Hamlet Soup Kitchen, please call Julie Woody at 910-997-4464.

## ***Making a Hospice Referral***



Is there someone you know who has severe health problems and could use some additional assistance? Did you know that anyone can make a referral for hospice services? Hospice services require a physician's order, but anyone can make the initial referral for services and a member of our admissions team will follow up with the patient, family, and physician as needed to determine the patient's eligibility and obtain a physician order. If you or someone you know is in failing health and needs some extra help, feel free to contact Richmond County Hospice at (910) 997-4464 to see if we may be of assistance.

## ***Benevolent Care Program***

Richmond County Hospice has been a provider of quality end of life services for nearly 30 years. One thing that sets Richmond County Hospice apart is the Benevolent Care Program that contributes to our successful ongoing ministry which is a promise that is central to the Richmond County Hospice mission.

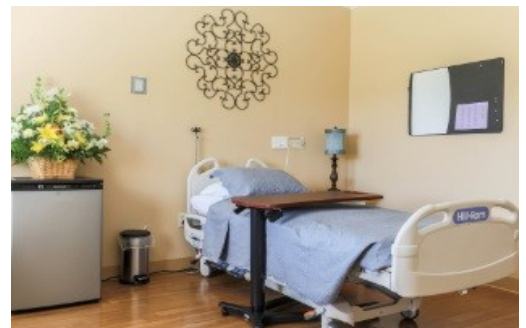
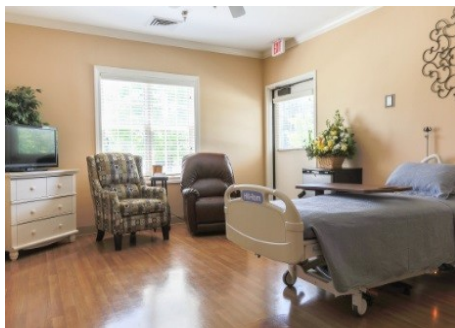
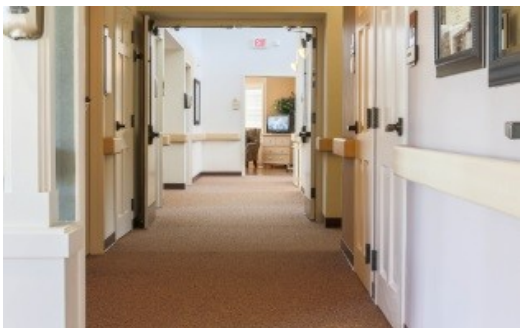
Richmond County Hospice is a not-for-profit health care agency providing hospice care to all who qualify regardless of their ability to pay. Your gifts to the Richmond County Hospice Benevolent Care Fund are very important to our community and its residents. Your support enables patients who are uninsured to receive quality hospice care. In 2014, more than \$50,000 in annual funds went solely to provide Benevolent Care to our patients. One hundred percent of the unrestricted gifts which were received help to meet this immediate benevolent care needs at Richmond County Hospice.



We are asking you to support our cause. Our goal this year is to raise \$50,000 for our Benevolent Care Program to be able to provide hospice services to our community to those patients in need. Your donation will be acknowledged on our donor's list. Our Benevolent Care Program relies on support of generous donors from our community. The Board of Directors and the staff of Richmond County Hospice, thank you for your consideration in supporting our Benevolent Care Program and our ministry.

In Hospice Service  
Kristina Leyden, LCSW ~ Interim CEO

## *Our Beautiful Hospice Haven General Inpatient Center*





## ***Congratulations to these Richmond County Hospice team members!!***

It is with great pride that this past year we were able to send several nursing staff members to a Hospice and Palliative Seminar for certification. The following nurses and nursing assistant PASSED their exam and are now CERTIFIED. In addition to our nursing staff, our Chaplain Chris Thornton, completed the course and passed his certification as a Chaplain Certified in Palliative Care.



*(Left to right) Heather Monroe, Julie Woody, Teresa Balzer, Hollie Smith, Jenny Mabe ,  
Chris Thornton and Tammy Bull.*

## **GIFTS FOR KIDS**

The employees of Richmond County Hospice sponsored a family with three young children at Christmas. Thanks to all of the employees who gave generous donations of money and gifts to make this Christmas special for a family that is less fortunate. Mary Martha Warnock, Hospice Social Worker, coordinated this effort after being contacted by Richmond County DSS.



## **CHRISTMAS ORNAMENT EXCHANGE**

Richmond County Hospice enjoyed the festivities of the Christmas Holiday with an ornament exchange.



Richmond County Hospice Staff and families participated in local parades in Ellerbe, Hamlet, and Wadesboro over the holiday season.



# Upcoming COMMUNITY EVENTS

Our next **Volunteer Training** session will be held in the Conference Room of the Richmond County Hospice Administrative Building from 5:30pm-8:30PM on **February 10<sup>th</sup>, 12<sup>th</sup>, 17<sup>th</sup>, and 19<sup>th</sup>**. If you would like to sign up for the classes or if you are just interested in learning ways in which you can volunteer, please call Lisa O'Neal at (910) 997-4464.

The **Annual Volunteer Banquet** to honor those who have volunteered with us this past year will be held on **April 14<sup>th</sup>**. Volunteers: save the date and look for your invitation in the mail closer to the event.

Wednesday April 22<sup>nd</sup>, we will hold our annual **Children's Grief Camp, Camp Haven** from 8:30AM-3:00PM on the Richmond County Hospice campus. The camp is open to children ages 5-12 who have experienced a significant loss within the past year. If you would like more information or a camp application, contact Sandy Black at (910) 997-4464.

The **Light of Life Memorial Service** will be held one evening during the month of May for the families of our patients who pass away between October 1, 2014, and April 1, 2015. Patients' families will receive a written invitation to the candlelight service of remembrance, but this service is open to the community as well. Contact Sandy Black at (910) 997-4464 for more information.

On **May 16<sup>th</sup>** from 7:00PM-10:00PM we will have a gala in **celebration of our 30<sup>th</sup> anniversary**. The event will be semi-formal with a country flare. Look for more information closer to the date of the gala. If you would like more information about this event, please contact Kristina Leyden or Julie Woody at (910) 997-4464.

In celebration of our 30<sup>th</sup> anniversary we are in the very early planning stages for late summer or early fall to have a community concert along with a barbeque and a meet and greet autograph session with any of our local celebrities who would be willing to come out for the event. If you or someone you know is in a band who would be willing to play for this event or if you or someone you know is a celebrity who would be willing to have a fan meet and greet session during this event, please contact Kristina Leyden or Julie Woody at (910) 997-4464.

Richmond County Hospice is excited about these upcoming events, is thankful for all of the continued support, and looks forward to 30 plus more years of serving our community.



## *How To Donate To Hospice*

There are several ways to contribute to your hometown hospice. You can donate your time by visiting patients, helping around the offices, helping during special events; in-kind gifts from our Wish List, or sending monetary contributions. Monetary donations may be done also in the following ways:

Sending a check with your donation by mail to our main address.

Calling directly to our offices and make a credit card contribution

Visiting our web site: <http://mpweb.org/hospice>, under the tab GIVE

You can donate on behalf of someone: in memory or in honor of a loved one, a friend, a neighbor, a member of your church or an employee; also, you may can contribute out of the goodness of your heart.

*Contributions are welcomed towards special projects such as our BRICKS FUNDRAISING: buying bricks to help build our Walk to Remember and the Veterans Wall. More information on this project may be found on our web site. All the funds collected through these projects are used directly and exclusively to benefit current and future patients under our care.*

## *In-Kind Donations*

Richmond County Hospice and the Hospice Haven is very fortunate to be surrounded by a compassionate community who supports our not-for-profit hospice agency. We are honored to care for patients and families during their end-of-life journey. With support of our faith community, business community, private clubs, civic organizations and individuals we are able to provide various items to our patients. Below is a list of “wish” items that are continually needed and will help our patients in their homes or in our inpatient center, the Hospice Haven:

Reminiscence Items: journals, pens, greeting cards, stationary; Laundry Supplies: laundry detergents, fabric softeners; Food and Basic Staples: applesauce (individual cups), bread, cake mixes and frostings, cereal, cereal bars, soda cans (sprite, diet coke and coke), cookies (snack size packages), crackers, (individual snack packs), Easy Mac, flavored creamers, frozen dinners, fruits, granola bars, individual ice cream, individual yogurts, jelly, juices, microwave popcorn, peanut butter, pudding cups, snacks; Kitchen supplies: aluminum foil, paper plates, napkins, plastic cutlery, Ziploc bags; Personal Supplies: chap stick, conditioner, shampoo, dental floss, Kleenex, lotion, soap, toothbrushes, toothpaste; Gift cards and Certificates: gas stations, Lowes, and Wal-mart.



Supporting Richmond County Hospice is as easy as shopping on-line. The Amazon Smile Foundation is a program where Amazon will donate 0.5% of the purchase price to YOUR charitable organization. Please go to your Amazon Account and choose Richmond County Hospice as YOUR organization!

<http://smile.amazon.com/ch/58-1678217>

## *Our Contributors enable us to provide Excellence In End-of-life Care*

We would like to take this opportunity to recognize these individuals and publicly acknowledge our appreciation for all they've done. With your continued support, we will be able to provide quality compassionate care to individuals in our community in the future.

### Memorials:

#### **Gary Fisher**

Breakfast Bunch

Laura Gilleland

James McLester

North Mecklenburg High School Graduates Reunion

Carole Venable

Joyce Bergh

#### **Patricia Counter**

Pete & Kristina Leyden

Dr. JL & Lenore Perry

Amy Oates

P J Wagner

Tracy Perry

Marcia Snow

#### **Fred Dennis Jr.**

Betty Matthews

L. Keith Dennis

#### **Sam Jarrell**

Pee Dee Baptist Church

Michelle Parrish

Frances Shepard

Anne Blalock

Town of Ellerbe

Jacqueline White

#### **Peggy Hicks**

Charles Yates

Allen Brothers Timber Company

Cynthia McIntyre

William & Ellar Hicks

Neal & Trudy Watkins

Libby & Steve Thornburg

#### **Mildred Lear**

Allen Brothers Timber Company

Cammie Greene

#### **Charles Munn**

Bill Rohleder

Joseph Bates

#### **Sara Raines**

Linda Taylor

Jean Taylor

#### **Roy Phillips**

Karen Hopper

Suellen & Tam Milton

Dan Puckett

Carla Helms

#### **Barbara McGirt**

The Thursday Rummy Club

#### **Ann Beck**

The Thursday Rummy Club

#### **Mary Brigman**

The Thursday Rummy Club

#### **Bobbie Pruitt**

The Thursday Rummy Club

#### **Reba Sheppard**

Elsie C. Wilson

Hiram T. Davidson, Sr.

#### **Elizabeth Hall**

Laurel Evans

#### **Richard Brigman**

Golda Brigman

Martha Brigman

#### **Linda Dyson**

Beverly Durden

#### **Sonny Greene**

Cammie Greene

#### **Charles Stuart Myers**

Judith Myers

#### **Anna Earlene Callahan**

Bridget Hall

#### **Howard Gibson**

Irene Lewis

#### **Earnest "Joe" Barfield**

Sandra L. Barfield

#### **Barbara Jenkins**

Ronald & Karen Jenkins

#### **Bobbie Capps**

Ann B. McCaskill

Elizabeth Smith

#### **William Seigler, Sr.**

Martha Eddins

Billy & Anne Huntley

Gracie O. Ratliff

Deep Creek Baptist Church

Deborah Beck

George & Frances Family

Don Vaughn

Turner & Tyson, PLLC

#### **Geraldine Williams Seigler**

Martha Eddins

Robert McCall

George & Frances Family

Don Vaughn

Turner & Tyson, PLLC

Deborah Beck

#### **Sarah Thompson**

Linda Thompson

#### **Floyd Capps**

Joseph Freeman

#### **Ralph Meacham**

J.R. & Dot Benson

Johnny & Carol Dye

Kilcommons Law, PC

Stella Floyd

Robert Robinson

#### **Emily Coleman**

Patricia Dellar

Meelora Zerick

Rosanne Leahy

Dan Zerick

Beth Evans

#### **Jeanette Roller**

Donald & Bobbie Gibson

Irene Lewis

**Annette Martin**

Deborah Lawrence

**Adele Combs**

Care & Share Nightingales

**Ann Street**

Jacqueline White

**Billy Caulder**

Marston Baptist Church

**Adele Combs**

Alice Warrick

**In Honor of:**

**Jackie White**

Neal & Trudy Watkins

**Sue & John Stevenson**

Neal & Trudy Watkins

**Margie & John Auten**

Neal & Trudy Watkins

**Jim Reid**

Neal & Trudy Watkins

**Joanne & Koy Dawkins**

Neal & Trudy Watkins

**Neal & Trudy Watkins**

John & Marjorie Auten

**Forever Tree:**

**Frances Sullivan**

Jane Burnette

**Jeanette Roller**

Randy Roller

**Hospice Haven Staff**

Randy Roller

**Edith McAuley**

Bill & Brenda Mitchell

**Leroy McAuley**

Bill & Brenda Mitchell

**Sarah McAuley**

Bill & Brenda Mitchell

**Alton McAuley**

Bill & Brenda Mitchell

**Cecil McAuley**

Bill & Brenda Mitchell

**Anna Earlene Callahan**

Karen Gilliam

**Coy Frye**

Rachel Bullard

**Coy Frye**

Ruth Frye

**Lewis Davis, Jr.**

Ramona & Lewis Davis

**Alan Snead**

Vivian Snead

**Augusta Bagwell Garrison**

Steven & Emma Melnick

**Ronnie Venable**

Julie Woody

**Ron Venable Jr.**

Julie Woody

**Carole Venable**

Julie Woody

**Hospice Caregivers**

Steven & Emma Melnick

**Helen Emmons**

Steven & Emma Melnick

**Ben & Eva Morrison**

Steve & Michelle Parrish

**Pete & Caroline Parrish**

Steve & Michelle Parrish

**Josephine Snead**

Steve & Michelle Parrish

**Ann T. Street**

Brad Street

**Sam Jarrell**

Brad Street

**Mary Brown**

Ola Wilder

**Jimmy & Sarah Ledbetter**

Anonymous

**Charles Wilder**

Ola Wilder

**Maxine Hinnett**

Ola Wilder

**Shaun Washington**

Ola Wilder

**Destiny Bennett**

Ola Wilder

**Archie & Betty Morrison**

Cheryl Grainger & Barbara Reynolds

**Henrietta Bryant**

Marilyn Lampley

**Henrietta Bryant**

William Bryant

**Alex Watkins**

Phyllis Watkins

**Michelle Yates**

Phyllis Watkins

**Laura Thomas**

Deborah Thomas

**Roy Phillips**

Pam Phillips

**Richmond County Hospice Staff**

Lynn Clewis

**Colon Williams**

Betty Williams

**Helen Ward**

Betty Williams

**James Hamptom**

Betty Williams

**Joe Clewis**

Lynn Clewis

**Betty Threadgill**

Rebecca Deese

**Doris Paul**

Linda Setzer

**Pilar Hidalgo**

Pete & Kristina Leyden

**Debbie Ward**

Pete & Kristina Leyden

**Melanie Hatcher**

Jessica Mims

**Samuel & Anna Callahan**

Amanda Martin

**Hedrick & Lillie Mae Callahan**

Amanda Martin

**Anna Pauline Callahan**

Amanda Martin

**Dewey Callahan**

Amanda Martin

**Lois Paul**  
Sandra Scott  
**Holly Cameron Wright**

Anonymous  
**Nina**  
Cristina DeAguiar  
**Mariquita**

Cristina DeAguiar  
**Bobbie Irwin**  
Betty Williams  
**Anonymous**

Lillie Brayboy

## Contributions

Anonymous

C. Bennett

Murtis Boan

Amy Burdulis

Ellerbe Telephone Company

First Presbyterian Church

First United Methodist Church Rockingham Circle #8

Marks Creek Presbyterian Church

Jon M. Owensby

Leeman & Judy Ormsby

Samuel F. Lewis

Vincent Rega

Arthur Street

Linda Taylor

Deborah Thomas

United Way of Richmond County



## In-Kind Donations

Lillie Capps

Rosa Derring-Issac

Eastern Stars

The Beck Family

Family of Grace Blue

Family of Marion Craddock

First United Methodist Church Rockingham Circle #5

Cheryl Grainger

Lisa Hatcher

Sharon Mauldin

Bill & Cindy McNichols

Helen Millen

Ann Morris

Mt. Olive Baptist School

“Multi-Focus” Circle Second Baptist Church

Sharon Munn

Judith Myers

Richmond County Schools Exceptional  
Children’s Department

Richmond Senior High School Varsity Cheerleaders

Rockingham Lions Club

Second Baptist Church Day School

Linda Setzer

Temple Baptist Church

“The Love Club” Second Baptist Church

Washington Street School





# Richmond County Hospice, Inc.

Hospice Haven & Anson Community Hospice

1119 US Highway 1 North  
Rockingham, North Carolina 28379

Non Profit  
Organization  
US Postage Paid  
Permit: 58  
Rockingham, NC



## Page 16 – Your Hometown— Winter 2015

Donation \_\_\_\_\_

Please send information on Volunteer Training

Please remove me from mailing list

I prefer to receive newsletter via email.

Email: \_\_\_\_\_

### Return to:

Richmond County Hospice  
1119 US Highway 1 North  
Rockingham, North Carolina 28379

## Your Gifts Make a Difference!

Enclosed is my check in support of Richmond County Hospice, Inc.  
(All contributions are tax deductible)

Donor Name \_\_\_\_\_

Address: \_\_\_\_\_

City/State/Zip: \_\_\_\_\_

In Memory Of: \_\_\_\_\_

In Honor Of: \_\_\_\_\_

To Celebrate or Commemorate: \_\_\_\_\_

Send Note To: \_\_\_\_\_

Name: \_\_\_\_\_

Address: \_\_\_\_\_

City/State/Zip: \_\_\_\_\_

How do you wish to have note signed? \_\_\_\_\_



or visit our website at  
[www.richmondcountyhospice.com](http://www.richmondcountyhospice.com)